



**CARS**



**ELECTRIC CARS**



**AUTONOMOUS CARS**



**UBER/LYFT CARS**





# WATER STRATEGY

Inspired by Lifestyle,  
Driven by Opportunity



*Connects, Creates, Enriches*

*Kathy Baker – City of Gold Coast*



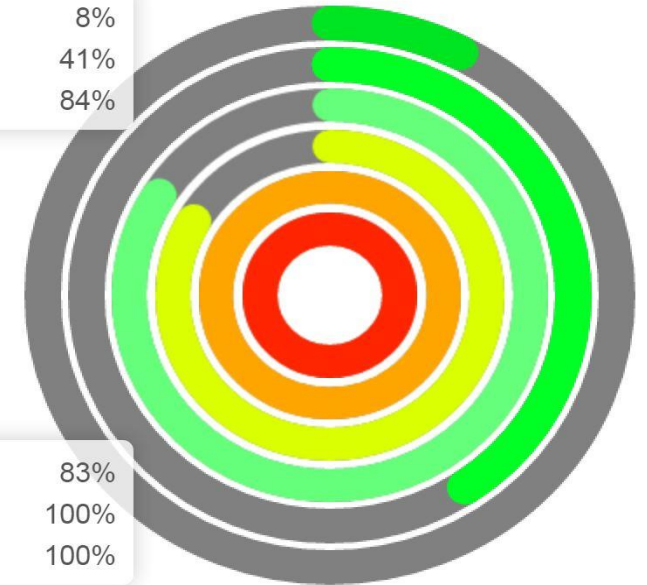
# Why ?

- 91% of residents agreed waterways are a significant reason why they live on the Gold Coast<sup>1</sup>
- 50% would consider moving away if waterway access, safety and condition declined<sup>1</sup>
- 55% of water-based businesses would relocate if access to the waterways is lost or became less reliable<sup>1</sup>
- 96% agreed that waterways contribute to their personal health and wellbeing<sup>1</sup>
- 86% of residents believe more should be done to protect and enhance the natural aspects of waterways<sup>1</sup>
- Contribution of water to the city (recreation, amenity, ecosystem services and industry) is conservatively estimated to be more than **\$4.3 billion per annum<sup>2</sup>**
- Premium paid for **proximity to water** is around **34% of total land value<sup>2</sup>**



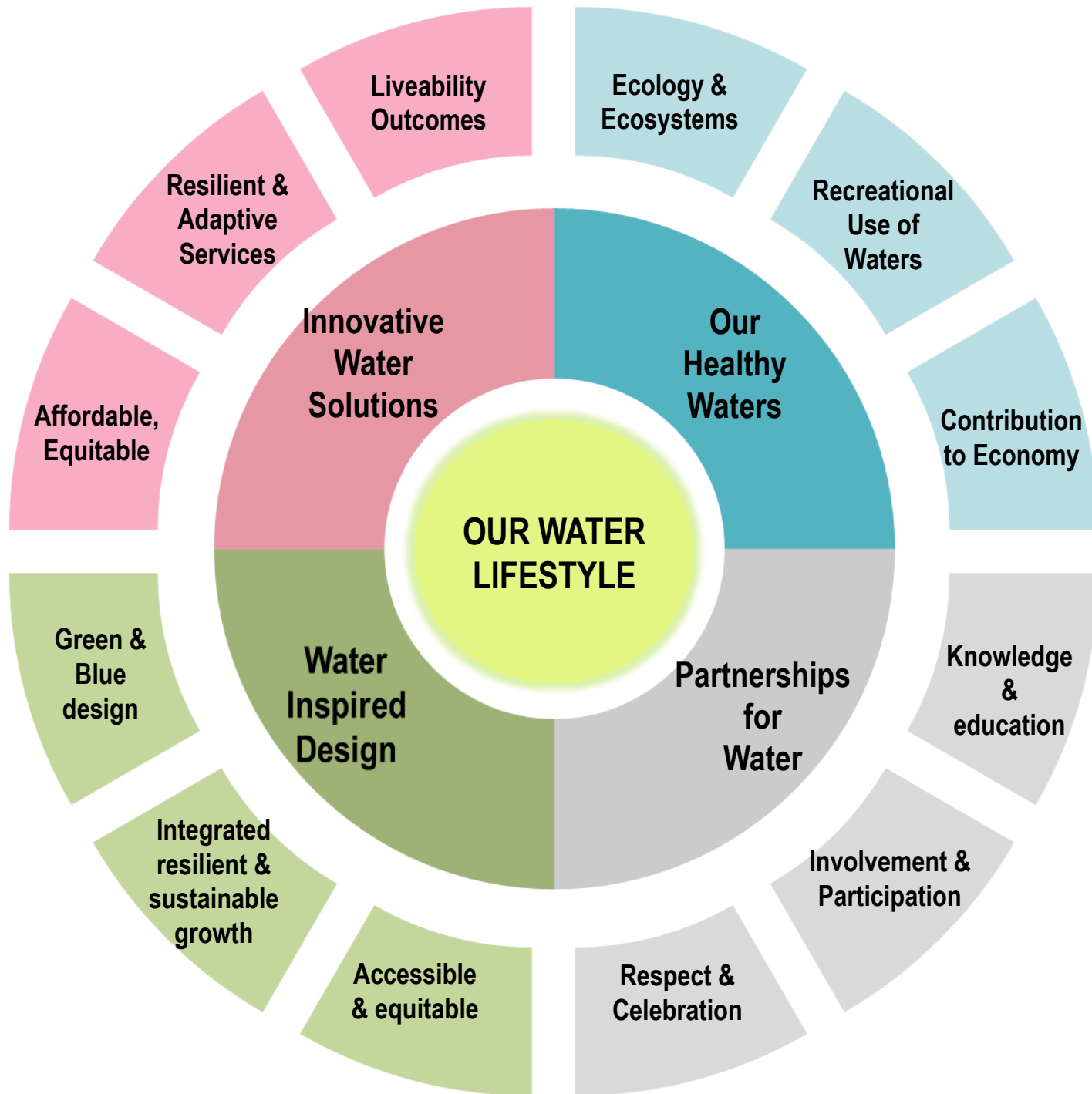
# Transition Development

## Developing WSC transition strategies



OLD PRACTICE





# Community Engagement Campaign

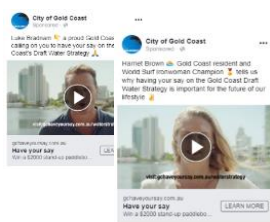
(1<sup>st</sup> Nov – 22<sup>nd</sup> Nov 2018)

4940 Clicks



Social Media

1262 Watched



Videos

283,000 People reached



Radio

2000 Interactions



Direct Engagement

1791 Responses



GC have your say

1058 Comments



Over 40,000 words

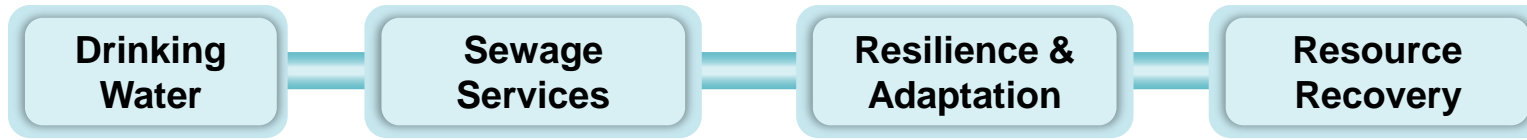
Independent Validation

456 Responses

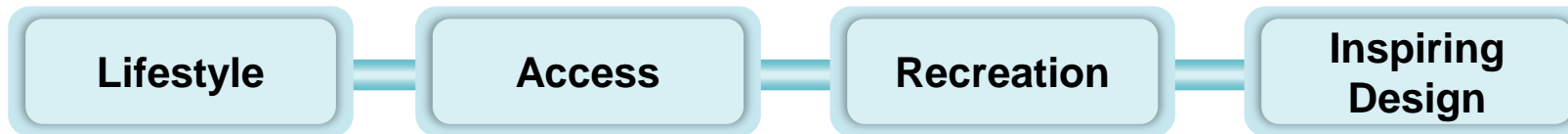


Telemarketing

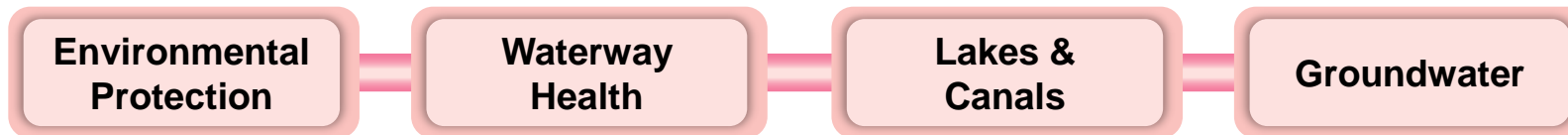
## Water as a Life Necessity



## Water as a Lifestyle Choice



## Water for a Sustainable Future



1058  
Comments



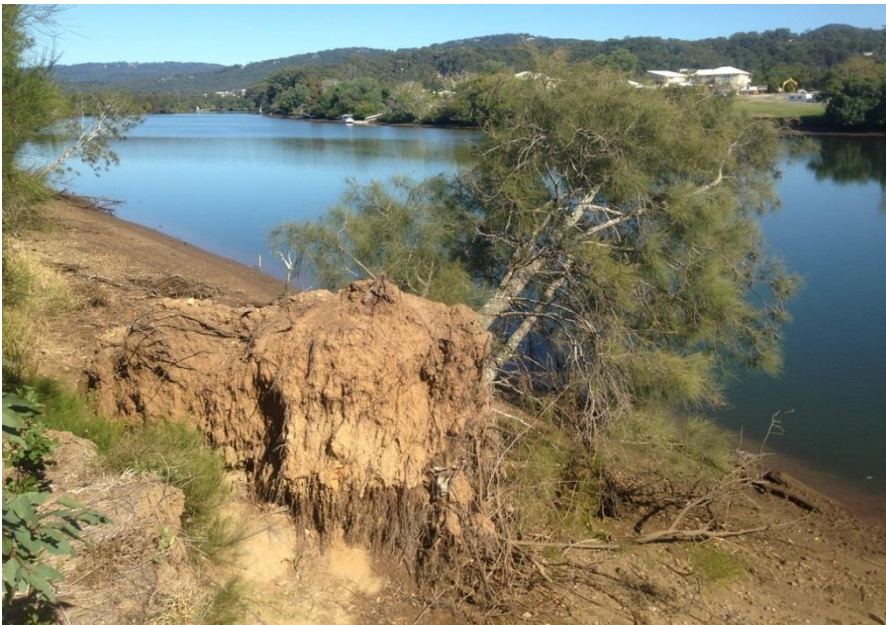
Over 40,000  
words

**The Transition has started**



# A changing environment

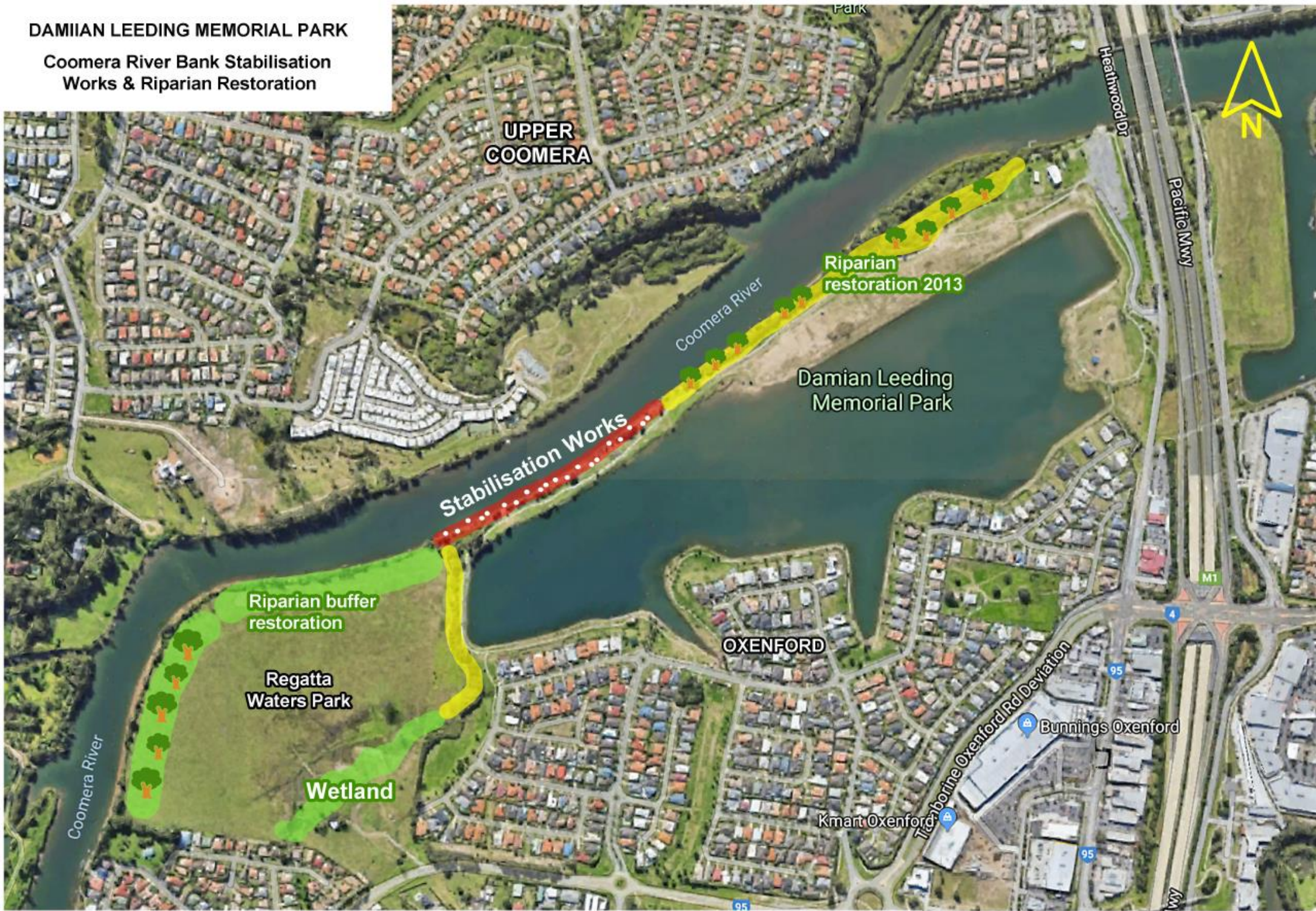
- River Bank Erosion
- Land use changes
- Dredging
- Stream modifications
- Boat activity





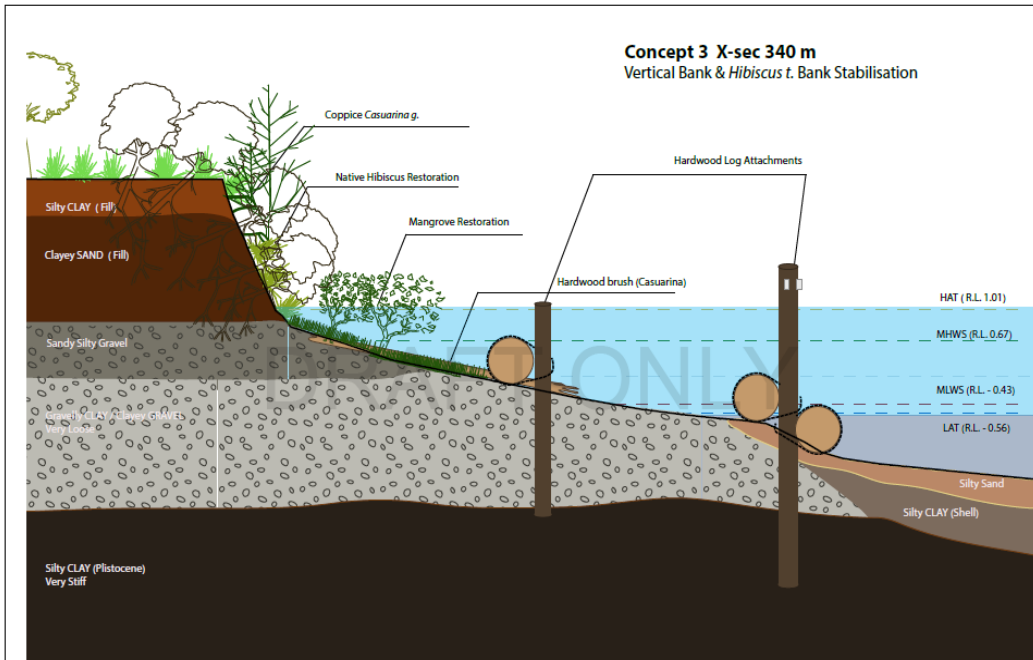
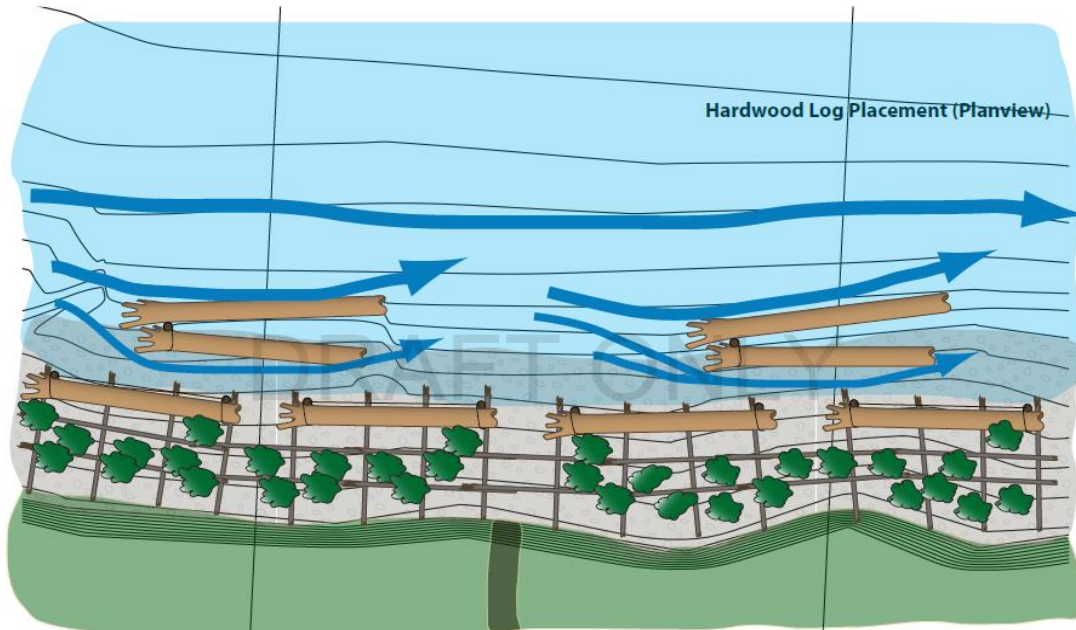
# DAMIAN LEEDING MEMORIAL PARK

## Coomera River Bank Stabilisation Works & Riparian Restoration





# Stabilisation & Revegetation





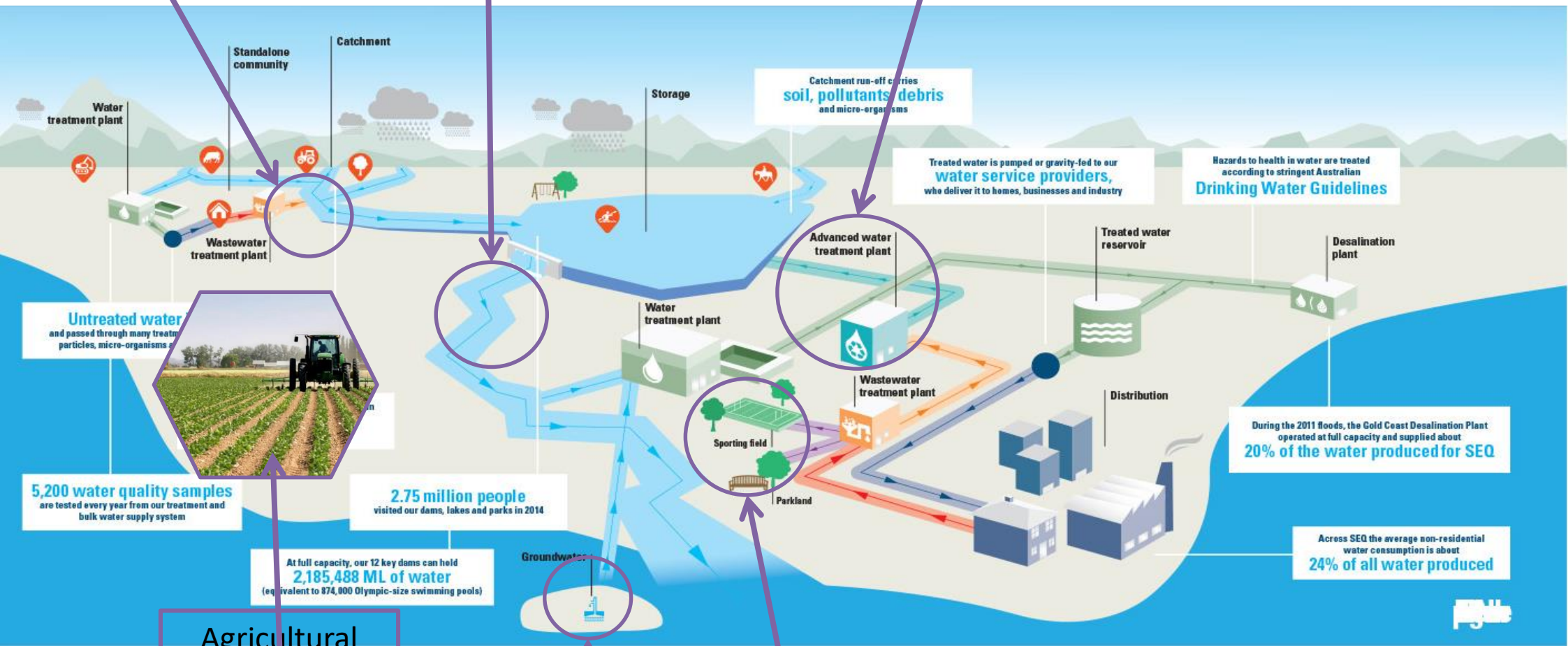




# Recycled Water and the Urban Water Cycle

Urban Wetlands

**greenheart**  
IMPLEMENTATION PLAN



Agricultural Scheme  
Replenishment of Groundwater Dependent Ecosystems



# City Wide Benefits

## Environmental

Reduced nutrient loads to the Seaway

1,500 Ha of green space irrigated

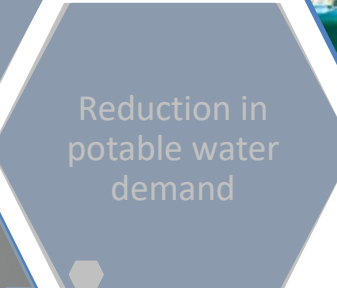
Maintaining and Enhancing Ecosystems



## Community

Addressing the Urban Heat Island effect

Reduction in potable water demand



## Economic

Drought proofing

Promoting Economic Development

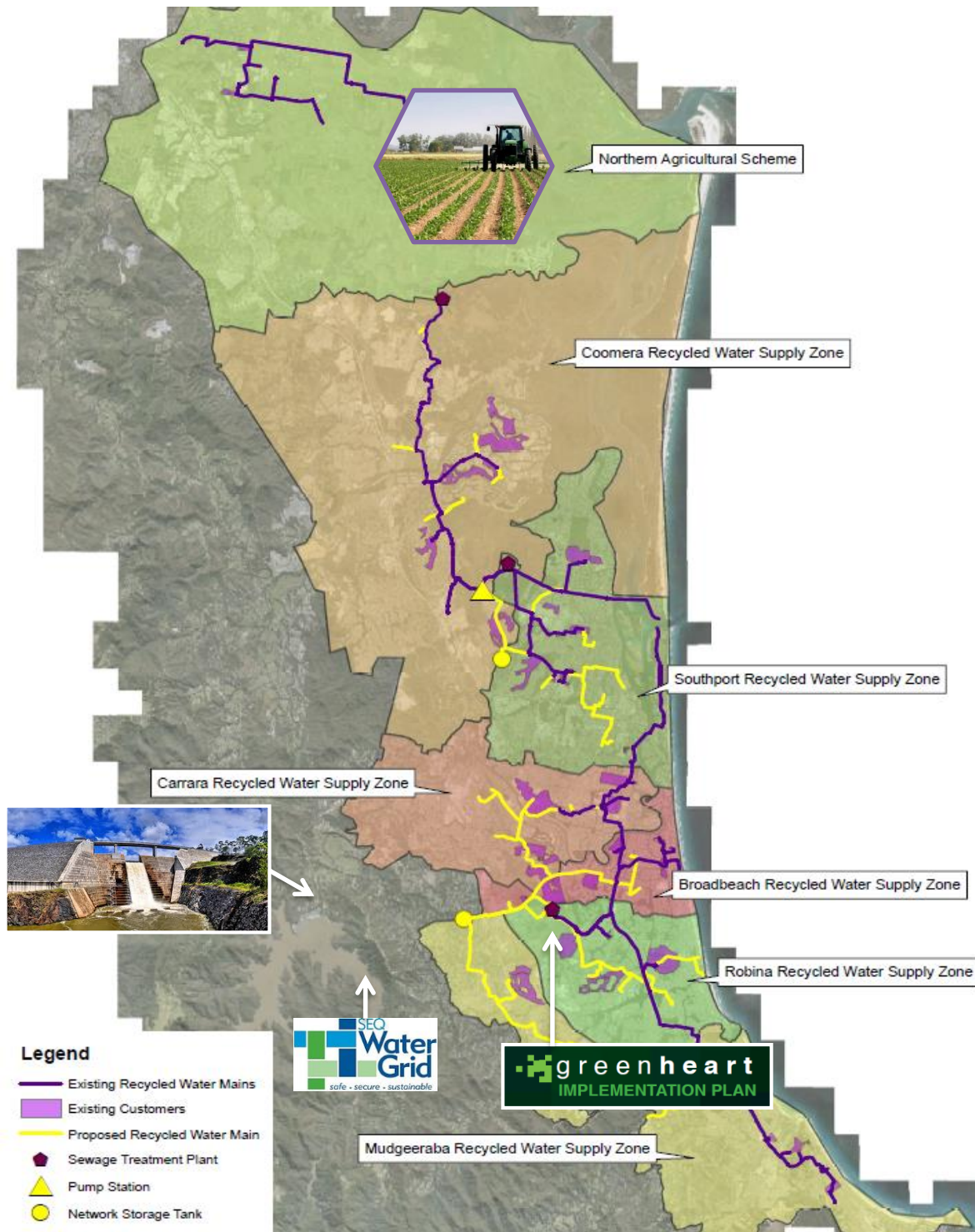
Facilitating the development of new industry

Enabler for transitioning to a water sensitive city

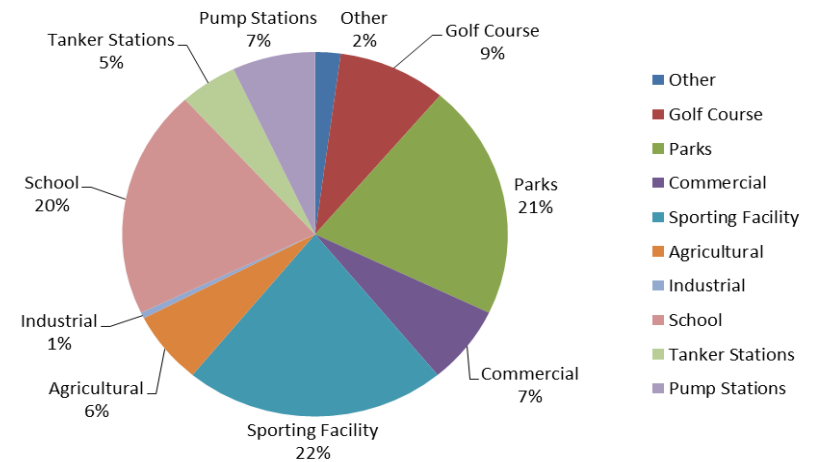




# Recycled Water Network Expansion



- \$98.5 M scheme, 187 customers, 33.5 ML/d
- Configurable, adaptable and expandable
- Re-use equivalent to dry weather release from Merrimac or Elanora STP



Asset Type	No. Customers	Average Demand [ML/d]
Golf Courses	17	8.9
Parks	39	4.4
Schools	38	1.1
Sporting Facilities	41	2.2
Agriculture	12	1.5
Industrial	1	1.4
Commercial	13	2.6
Tanker Stations	9	0.4
Pump Stations	13	0.5
Other	4	10.5
<b>TOTAL</b>	<b>187</b>	<b>33.5</b>



# What's next in our roll out

- Integrated and Adaptive Planning for City wide infrastructure Planning
  - Land use and water planning
  - Flood mitigation and resilience taskforce
- Coastal Hazard Adaptation Strategy
- Flat Rock Creek Restoration
- Energy Generation – PV





Thankyou