



CRC for
Water Sensitive Cities

Industry Impact of the CaWSC Research Program: Insights from five case studies

Annette Bos & Megan Farrelly

Adelaide 20 January 2015



An Australian Government Initiative

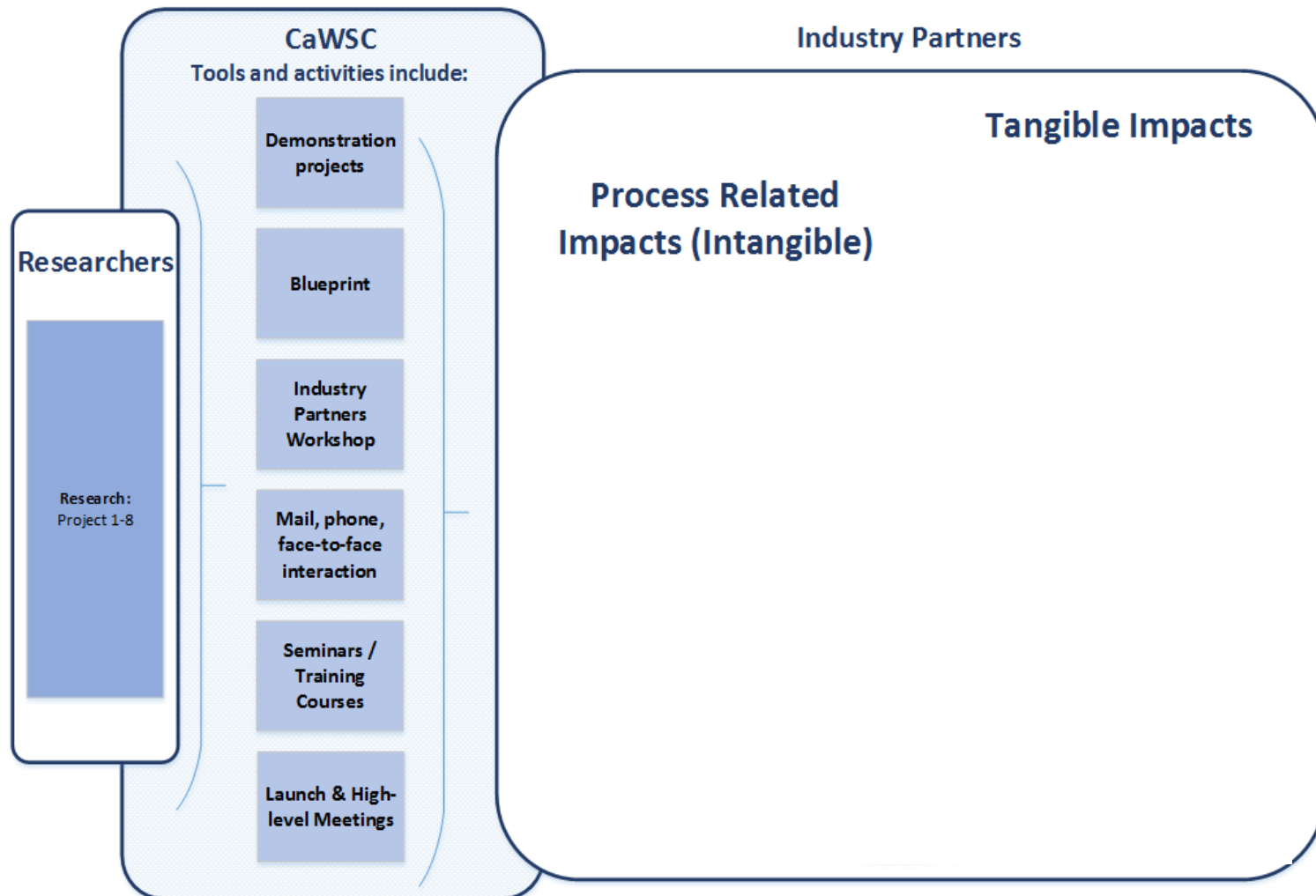


Background

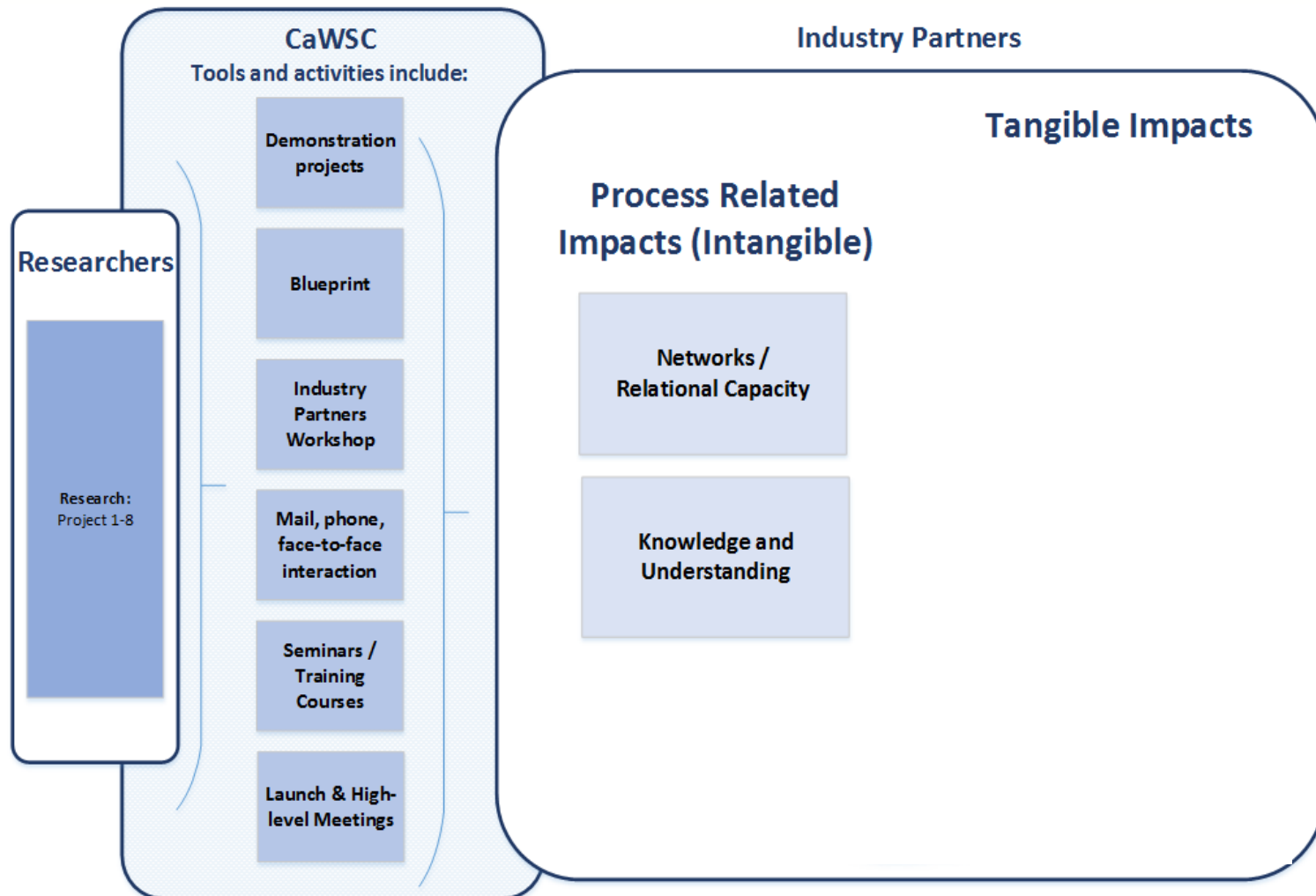
- Retrospective evaluation of Cities as Water Supply Catchments program
- Objectives:
 - If, and how did collaboration lead to impacts
 - Examining of critical factors in establishing and maintaining impact pathways
 - Establishment of roles and responsibilities of research and industry partners
- Five case studies of ‘successful’ collaboration



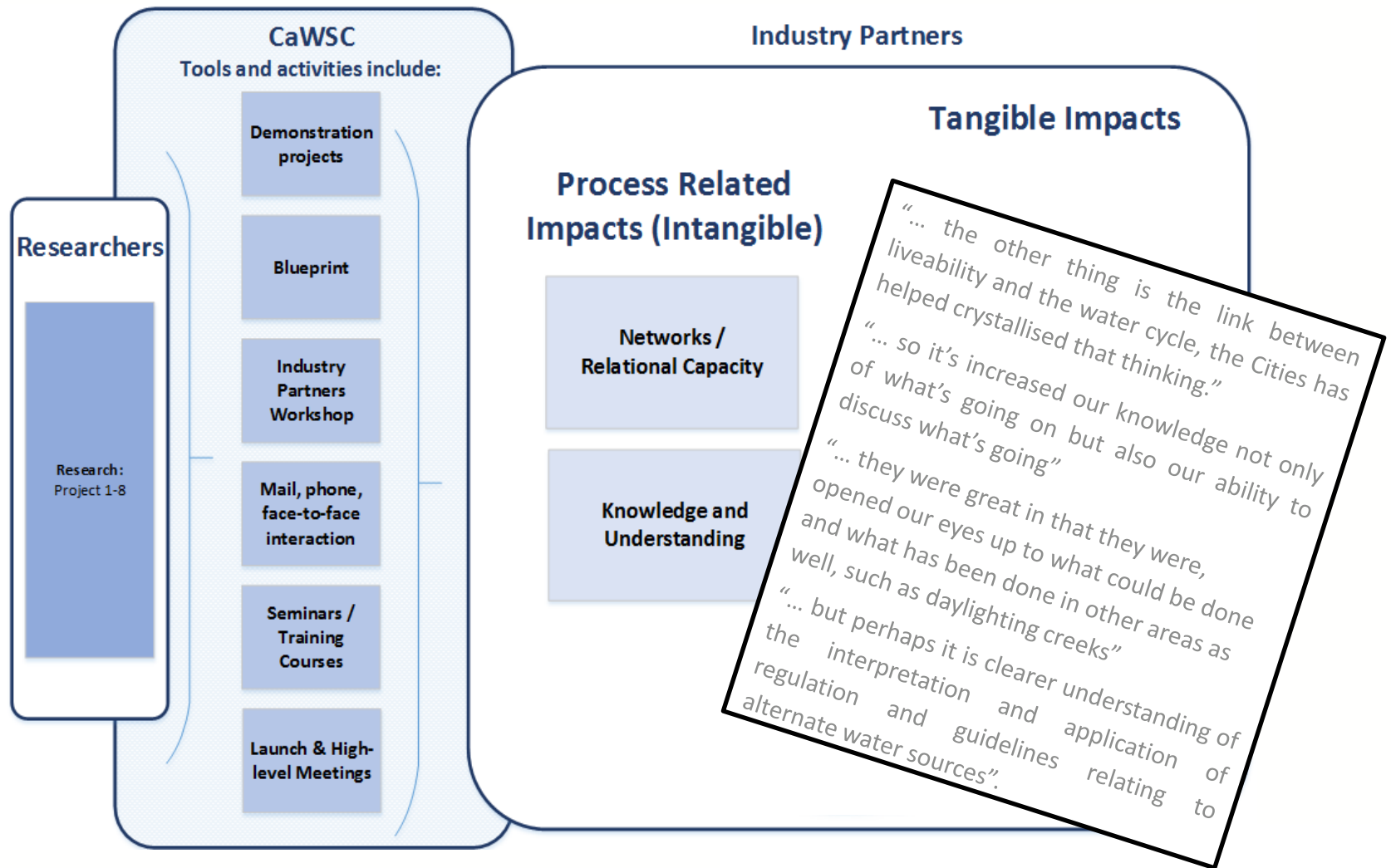
CaWSC Impact Pathways



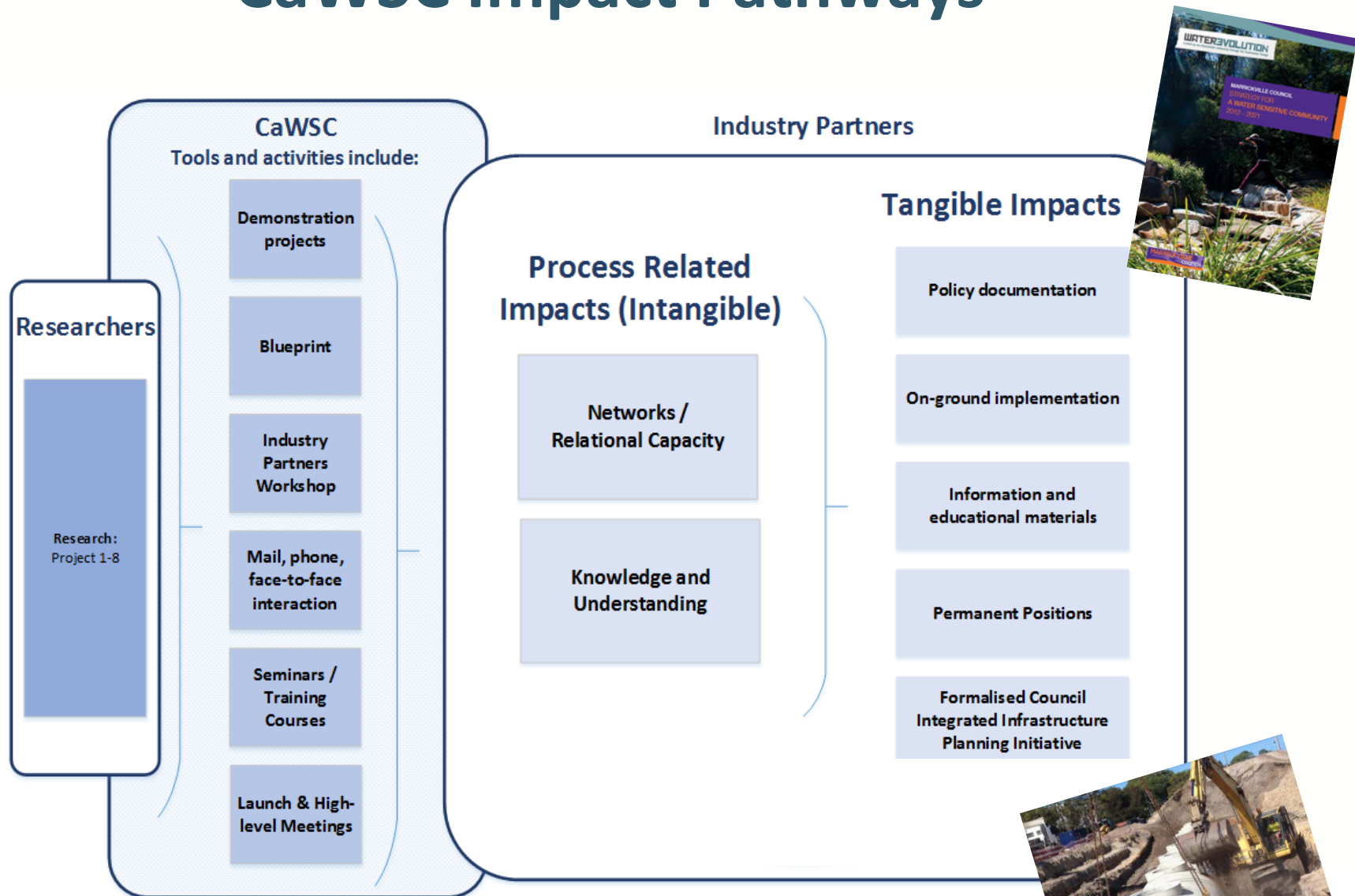
CaWSC Impact Pathways



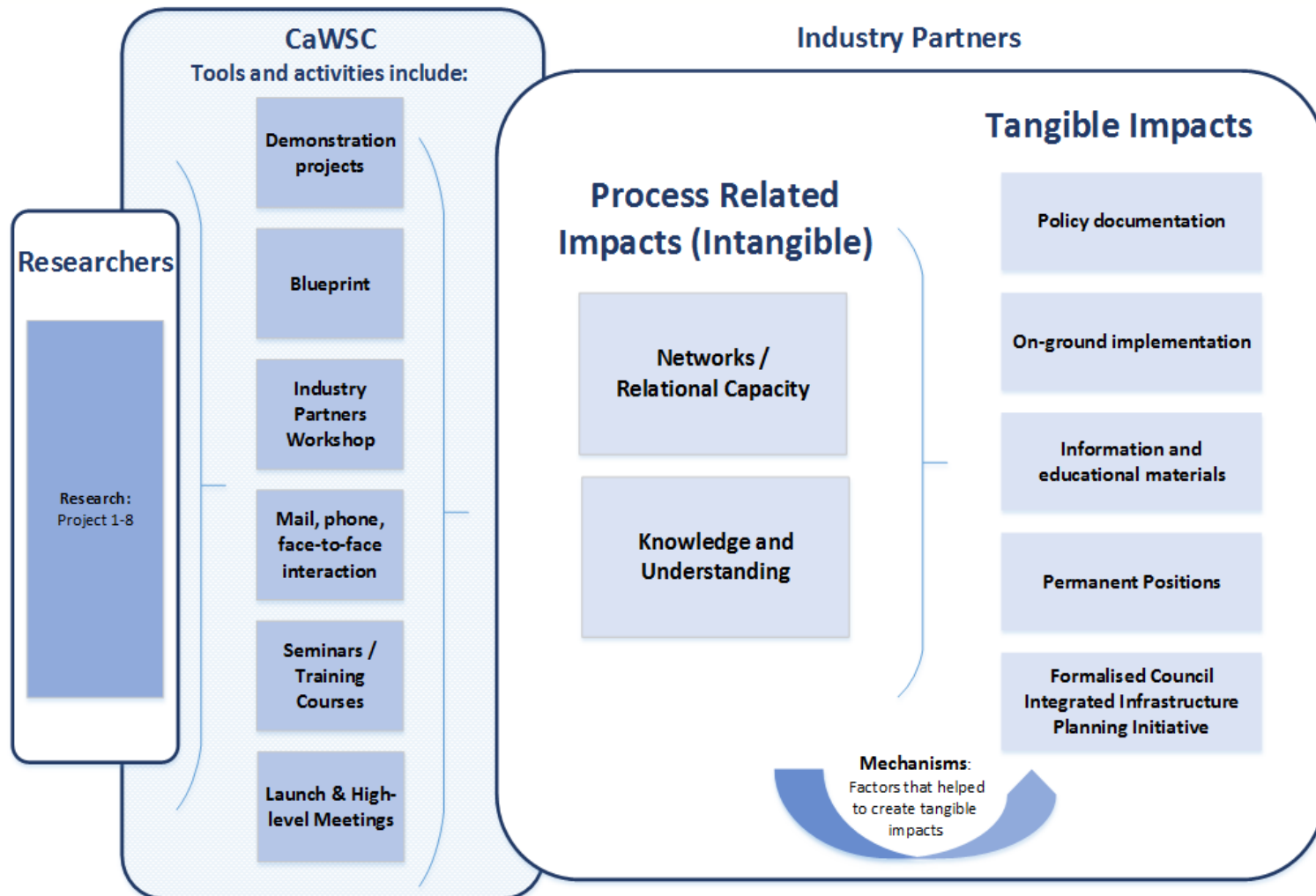
CaWSC Impact Pathways



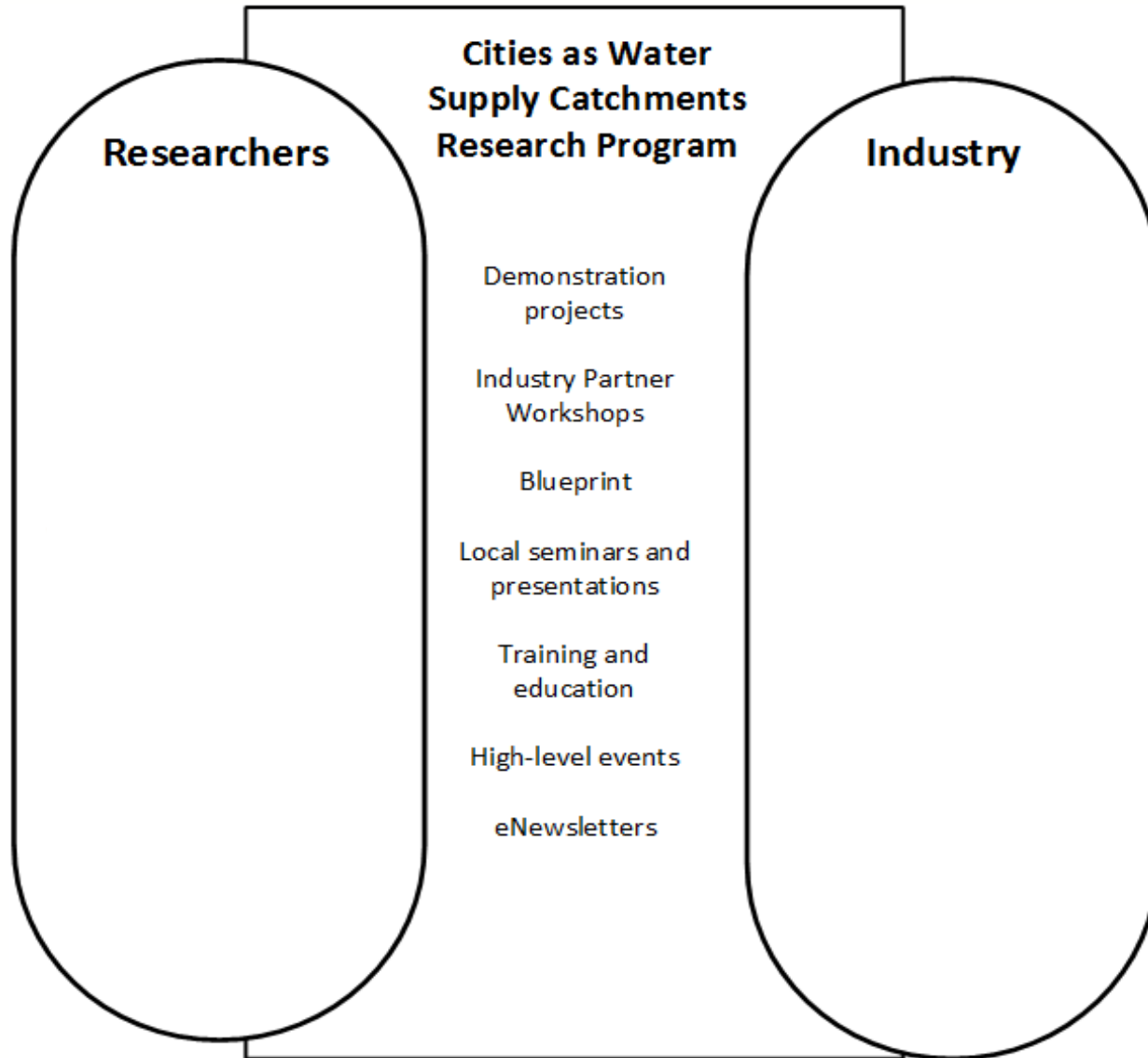
CaWSC Impact Pathways



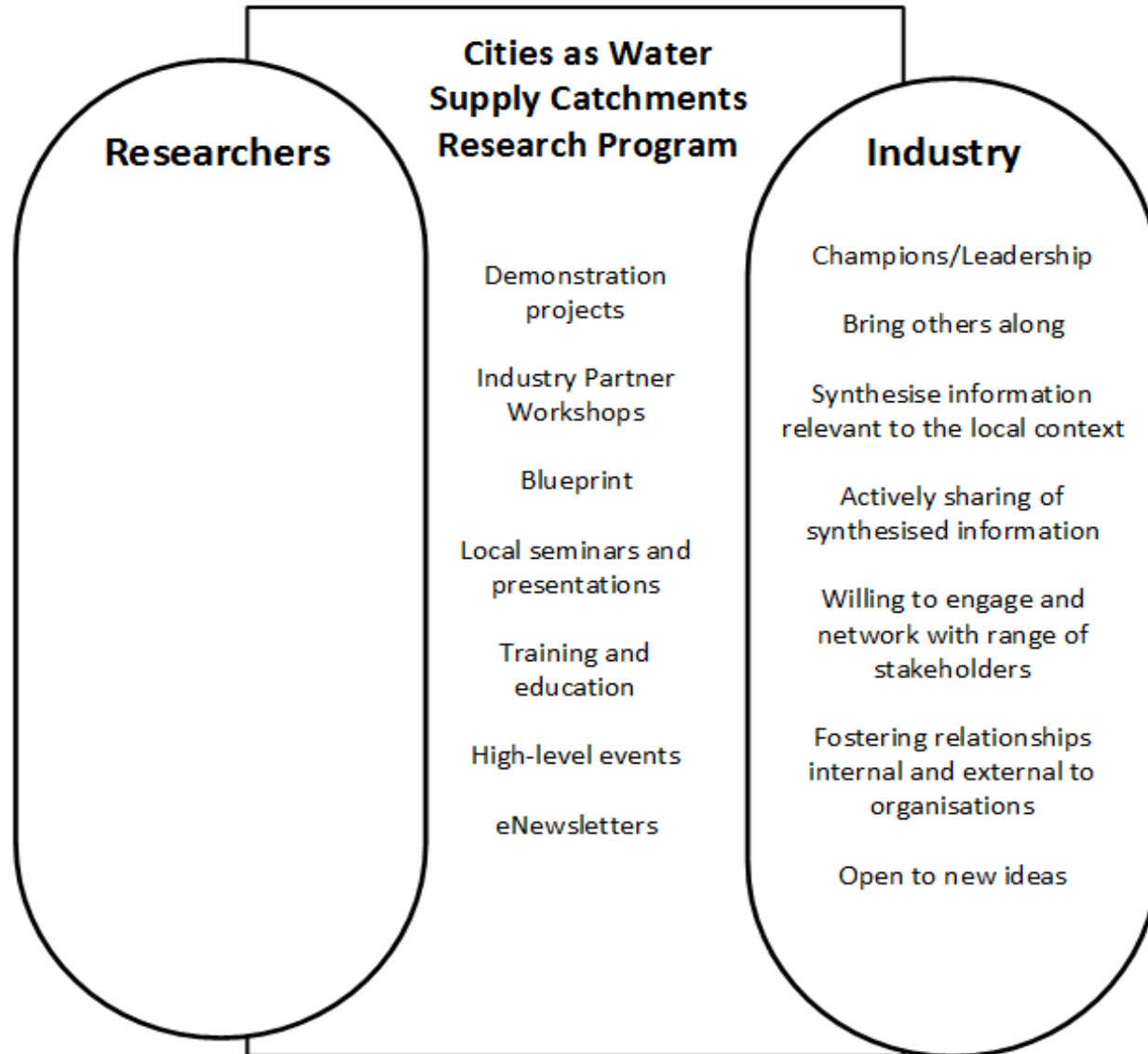
CaWSC Impact Pathways



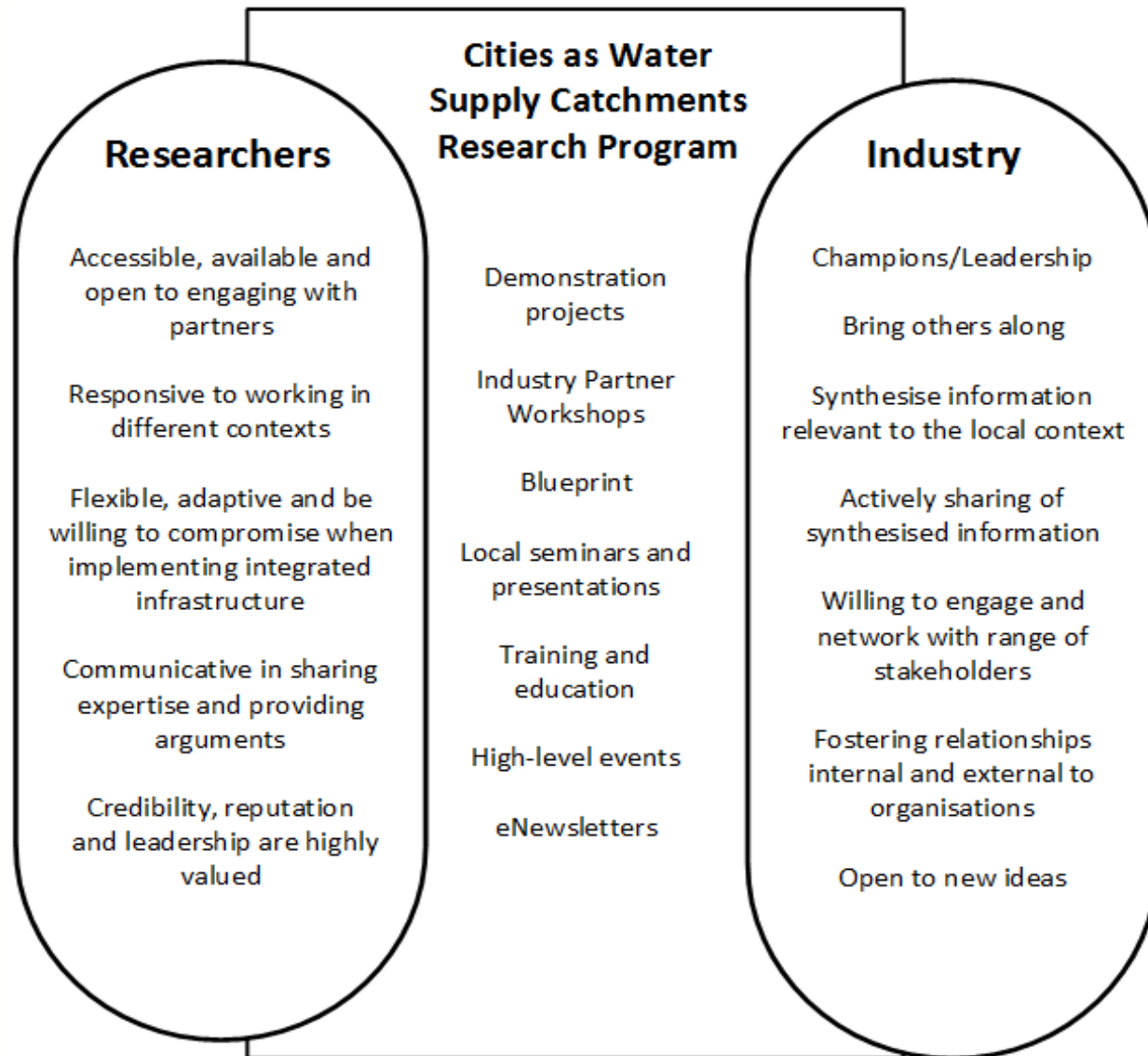
Roles of Partners



Roles of Partners



Roles of Partners





Lessons for the CRCWSC research and industry partners include:

- “Leading too far ahead”
- Necessary focus on key organisational agenda building activities
- Demonstration projects go beyond testing technological feasibility and practitioner confidence
- Necessity of accessible, available and visible researchers

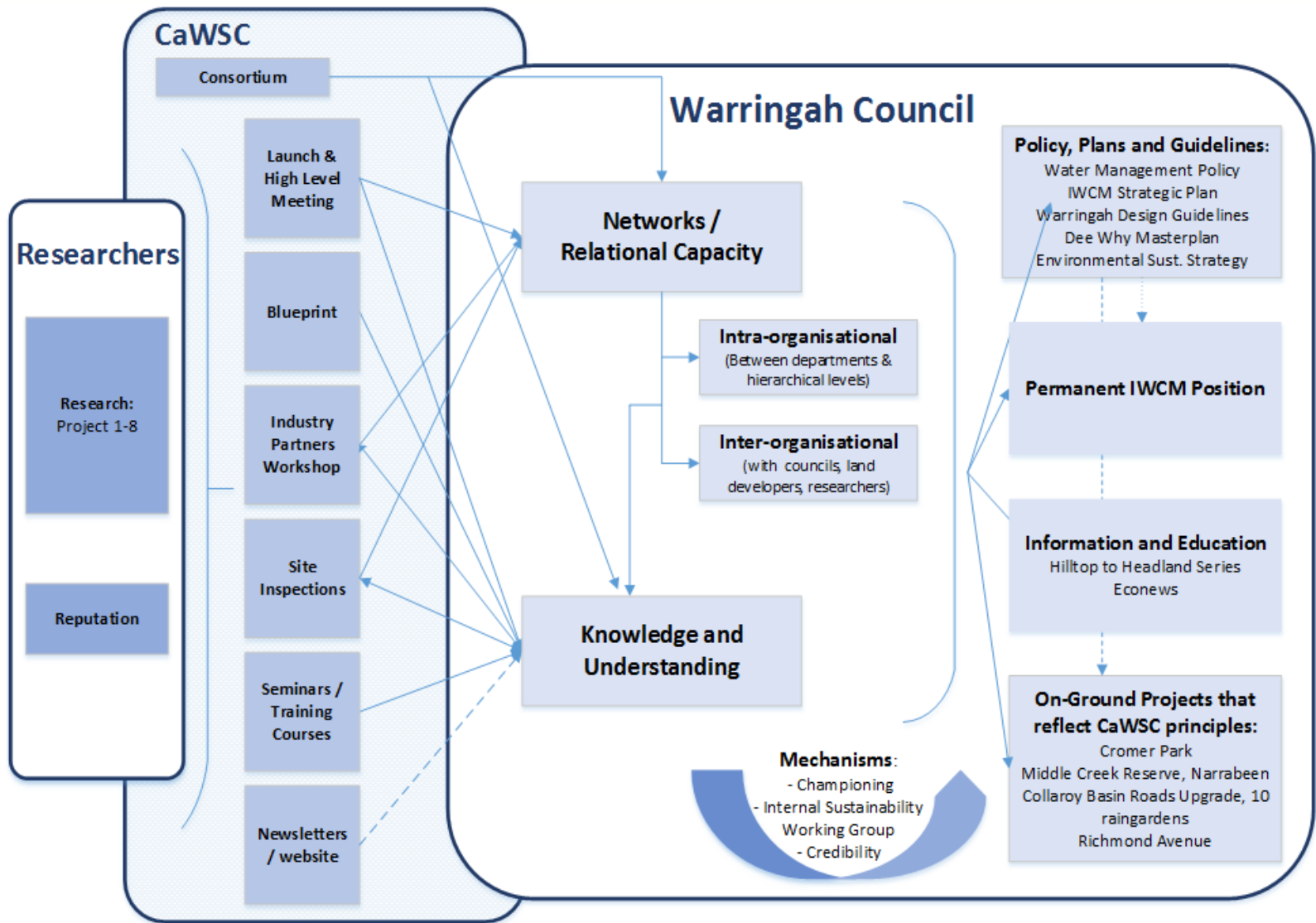
Thank you!



MONASH University
Water for Liveability Centre



CRC for
Water Sensitive Cities



Understanding CRCWSC Impact

- To understand stakeholder perceptions regarding impact:
 - Overall, what do you think the research/industry collaboration will have achieved/delivered by 2021 for Adelaide?
 - What do you think the research/industry collaboration will have achieved/delivered to your organisation between now and 2021?
 - What do you see as your/your organisation's role in delivering the above?
 - How can the wider CRC support you in this?