



Brabham – Project Overview



Government of **Western Australia**
Housing Authority

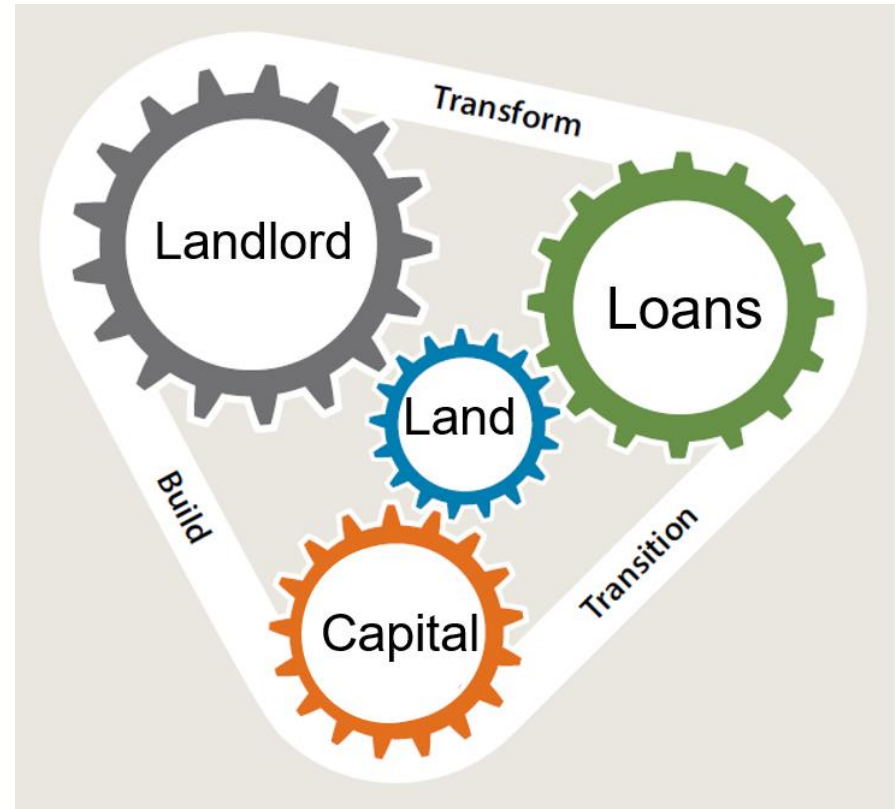
OPENING DOORS
To Affordable Housing



CRC for
Water Sensitive Cities

About the Housing Authority

- Landlord, Developer, Financier.
- Land development is a central role.
- 25+ years of creating & regenerating communities across WA in partnership with the private sector.
- Affordable Housing Strategy targeting 30,000 affordable homes by 2020.



Government of **Western Australia**
Housing Authority

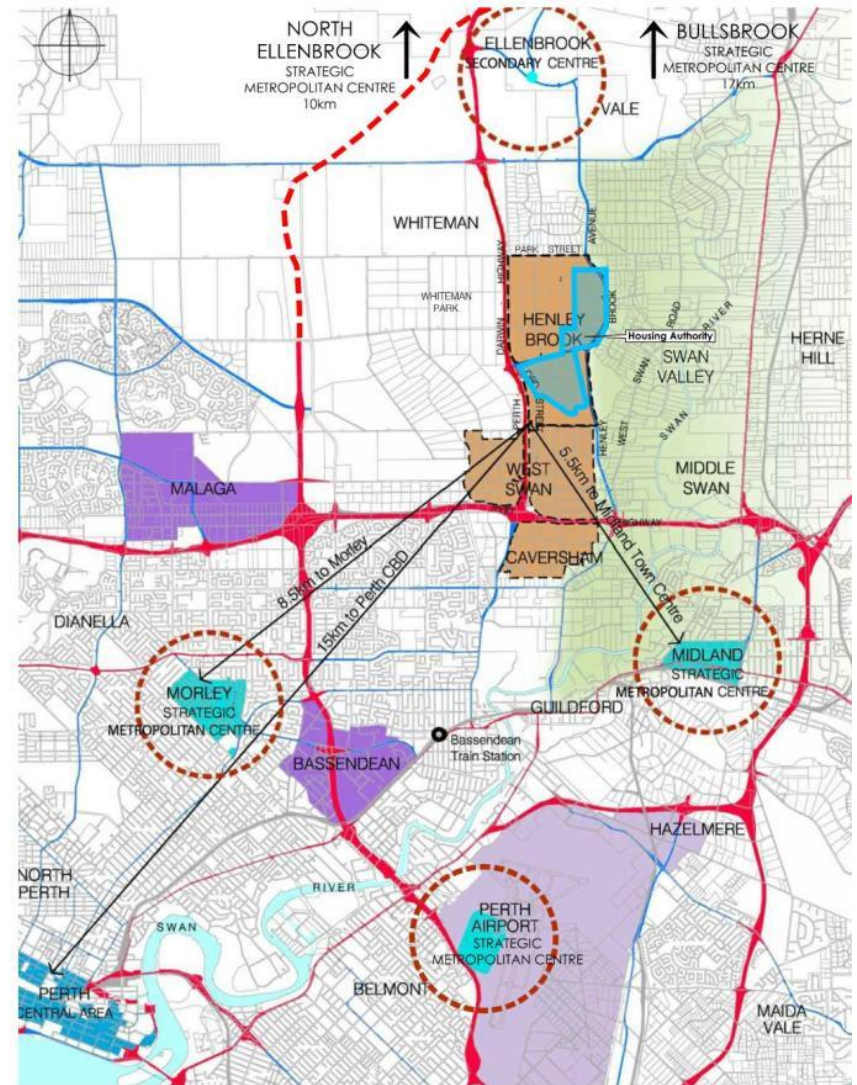
OPENING DOORS
To Affordable Housing



CRC for
Water Sensitive Cities

About Brabham

- Brabham is located 15km north east of Perth in the City of Swan.
- It is nestled between the Swan Valley wine region and Whiteman Park, a 4,000ha recreation and conservation park.
- It has good access to employment centres and the Perth Airport.



Government of **Western Australia**
Housing Authority

OPENING DOORS
To Affordable Housing



CRC for
Water Sensitive Cities

Housing's Land

- 220 hectares.
- New housing estates to west and north.
- Small rural holdings to east.
- Bush Forever site to south.
- Development potential of 3,000 dwellings.
- Housing is seeking a development partner.



Government of **Western Australia**
Housing Authority

OPENING DOORS
To Affordable Housing



CRC for
Water Sensitive Cities

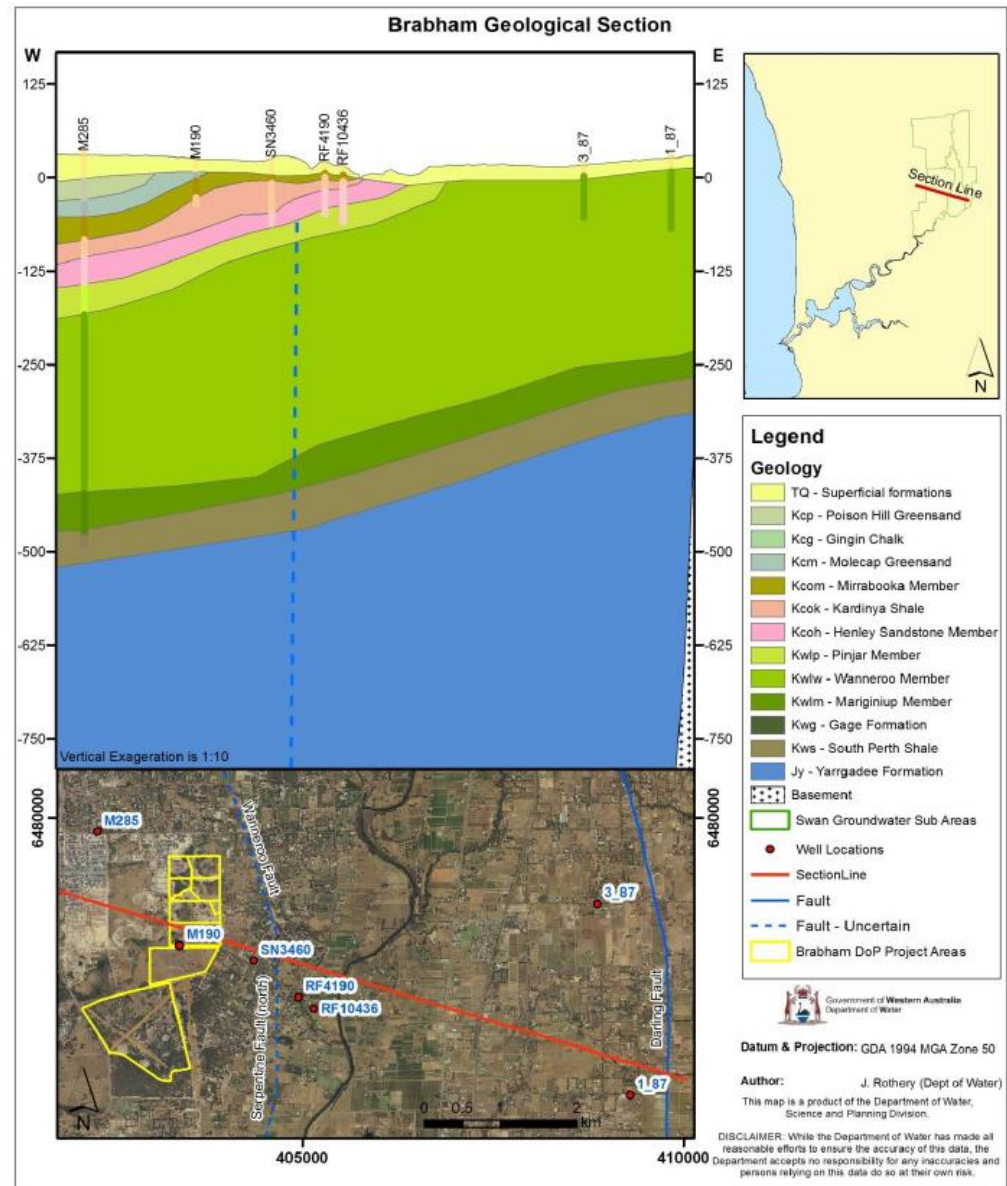
Environmental Sustainability

- One of 5 core principles to support Housing's vision.
- Wetlands and high groundwater – water sensitive design.
- Innovation required to address lack of available groundwater.
- Water West study into recycling wastewater:
 - 115 ML/ pa to irrigate POS
 - 580 ML/ pa wastewater
 - MBR treatment



Managed Aquifer Recharge

- Department of Water study.
- Inject surplus water into the Leederville aquifer.
- Additional treatment required – ultrafiltration (\$1.65/ KL) or reverse osmosis (\$2.44KL).
- Possible use of sub-soil drainage to reduce costs.



Further Study

- Source water quality and quantity characterisation.
- Sub-soil drainage as an additional water source.
- Targeted groundwater monitoring.
- Hydrogeochemical evaluation.
- Groundwater conceptualisation and numerical modelling.



Government of **Western Australia**
Housing Authority

OPENING DOORS
To Affordable Housing





Any Questions?



Government of **Western Australia**
Housing Authority

OPENING DOORS
To Affordable Housing



CRC for
Water Sensitive Cities