

2021 and beyond

Moving from discovery to action

Our changing focus

At the Cooperative Research Centre for Water Sensitive Cities (CRCWSC), we envision future cities and towns that are sustainable, resilient, productive, and liveable.

A strong foundation: 2012—2016

During our first 5 years of funding, our research yielded over 1000 publications, tangible successes in policy change, and on-ground demonstrations of innovative technologies. All allow us to better understand the challenges facing cities and how to solve them.

- In 4 research programs, 314 researchers delivered guidelines, fact sheets, articles, and reports on topics ranging from changing a community's water use to regulations that better manage stormwater and groundbreaking new technologies for recovering nutrients from wastewater.
- The calibre of CRCWSC research has received prestigious recognition from national and international journals and awards.
- At 15 locations around Australia, our Research Synthesis process helped to elicit and develop tailored water sensitive design ideas using the latest evidence.
- Our research and advice contributed greatly to the Victorian Government's Water for Victoria plan, and to progressive urban developments in Perth, Brisbane, and Melbourne.
- Already used to benchmark Perth, Adelaide, and the Gold Coast, our Water Sensitive Cities Index is an early flagship product enabling cities to rank their water sensitive performance, design transition strategies, and track progress.

 **4**
PROGRAMS

 **314**
RESEARCHERS

 **1000+**
RESEARCH OUTPUTS

 **5**
YEARS

We started on a strong foundation →

See our future →

80+
PARTICIPANTS

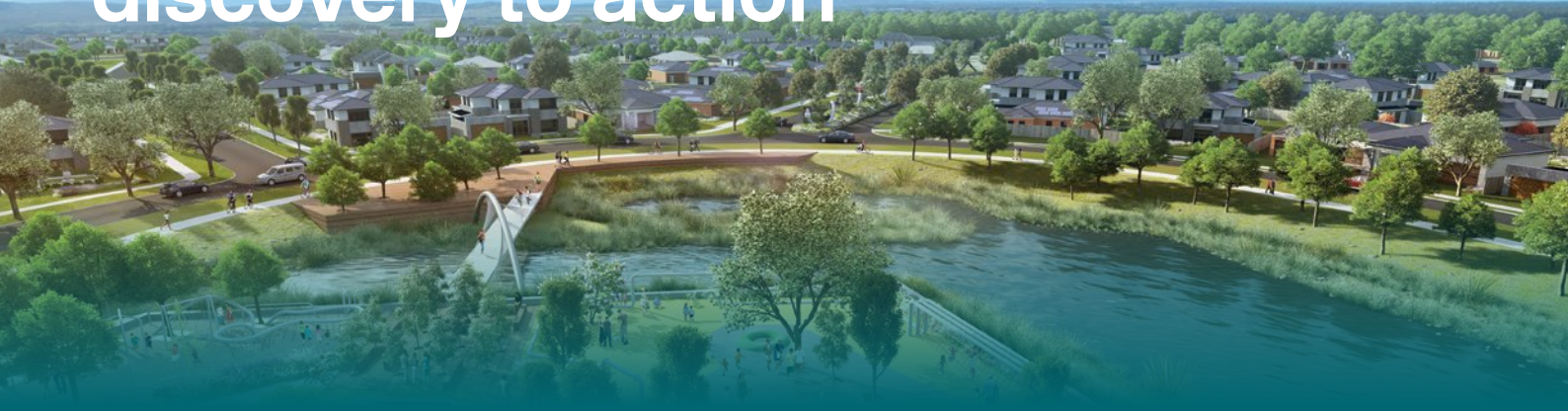
 **39+**
WORKSHOPS & TRAINING EVENTS
(IN FY15/16 ALONE)

 **123**
waterSENSE Newsletters

 **3K+**
SUBSCRIBERS

2021 and beyond

Moving from discovery to action



Our plan for the future: 2017—2021

Undertaken with dedicated investment in pathways for adoption, our discovery research record lays a powerful foundation for action. We want our research from the last 5 years to have tangible impact, so we are now focused on developing innovative tools and synthesising knowledge to fill gaps in current industry practice.

In 2016, we consulted widely and deeply with our partners and stakeholders to gauge ongoing industry needs. Those needs form the basis of our exciting next phase: applying and testing our existing research outcomes via three themes that promote adoption and impact: Research, Tools, and Influence.

In **Research**, we will bring together researchers, industry, and government experts to integrate existing, interdisciplinary outputs and insights. Projects include:

1. Water sensitive city transition strategies and implementation plans
2. An economic evaluation framework to apply to business case development

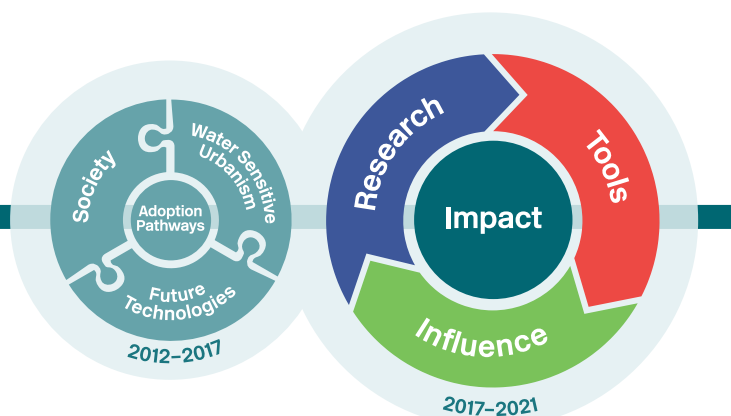
3. A framework for better planning across different scales of development
4. Water sensitive solutions for in-fill developments in our cities
5. Guidelines and solutions for the specific challenge of developing high groundwater regions.

Tools and products will support our partners and others to:

- Envision their future cities
- Design transition strategies
- Deliver those strategies.

In **Influence**, our activities will include:

- A think tank to challenge conventional approaches to urban water cycle management
- Position papers to guide policy and advocate for change
- A national network to build water sensitive capacity.



The result will be world-class integrated research and research adoption that will leave a legacy in cities and towns across Australia and beyond.

Cooperative Research Centre for Water Sensitive Cities



Level 1, 8 Scenic Boulevard
Monash University, Clayton VIC 3800

www.watersensitvecities.org.au



info@crcwsc.org.au



[@crcwsc](https://twitter.com/crcwsc)



CRC for
Water Sensitive Cities