



CRC for
Water Sensitive Cities



4th water sensitive cities conference



Australian Government
Department of Industry and Science

Business
Cooperative Research
Centres Programme

Design for Groundwater

Daniel Jan Martin
UWA School of Design

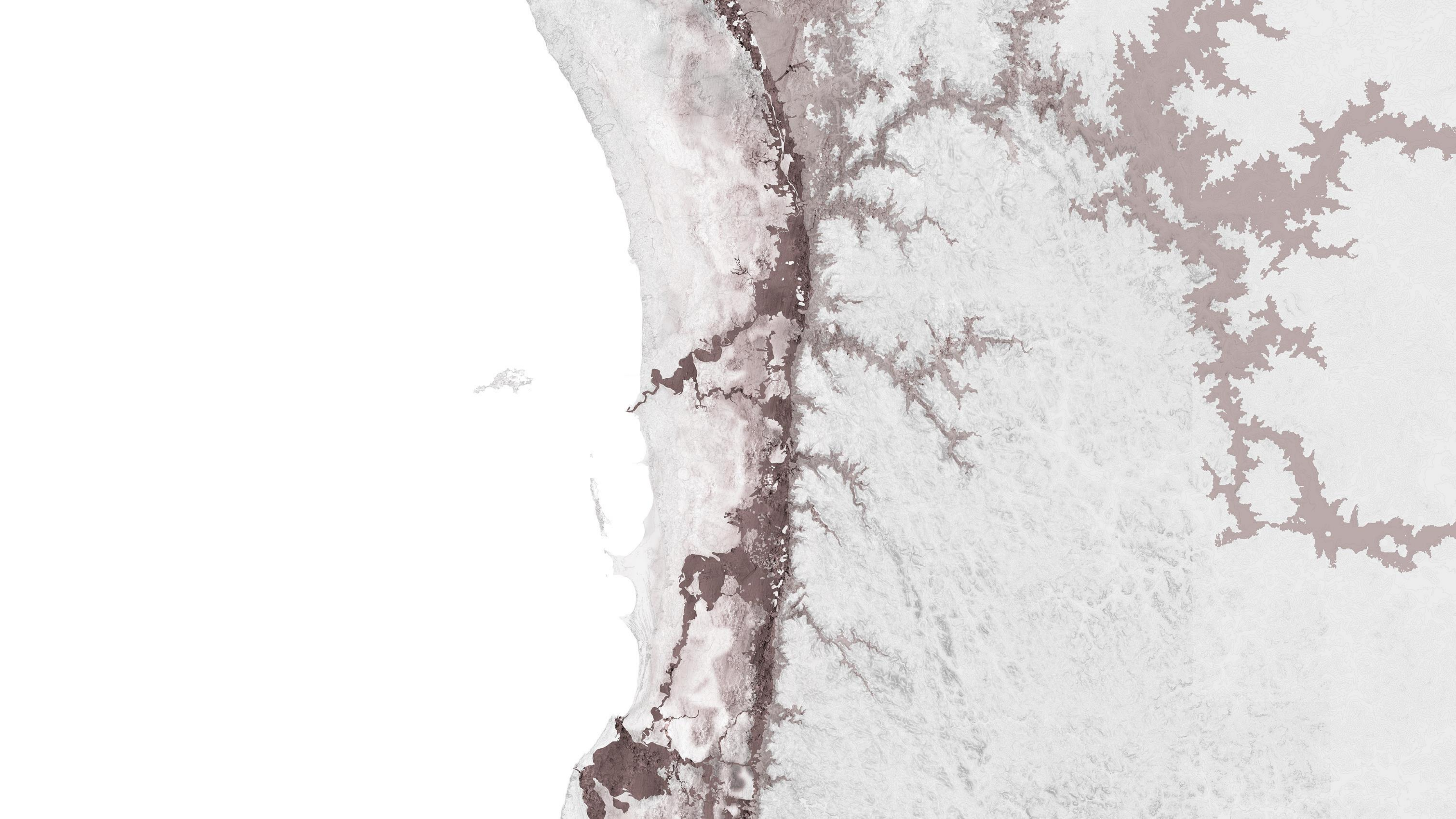
26-28 March 2019

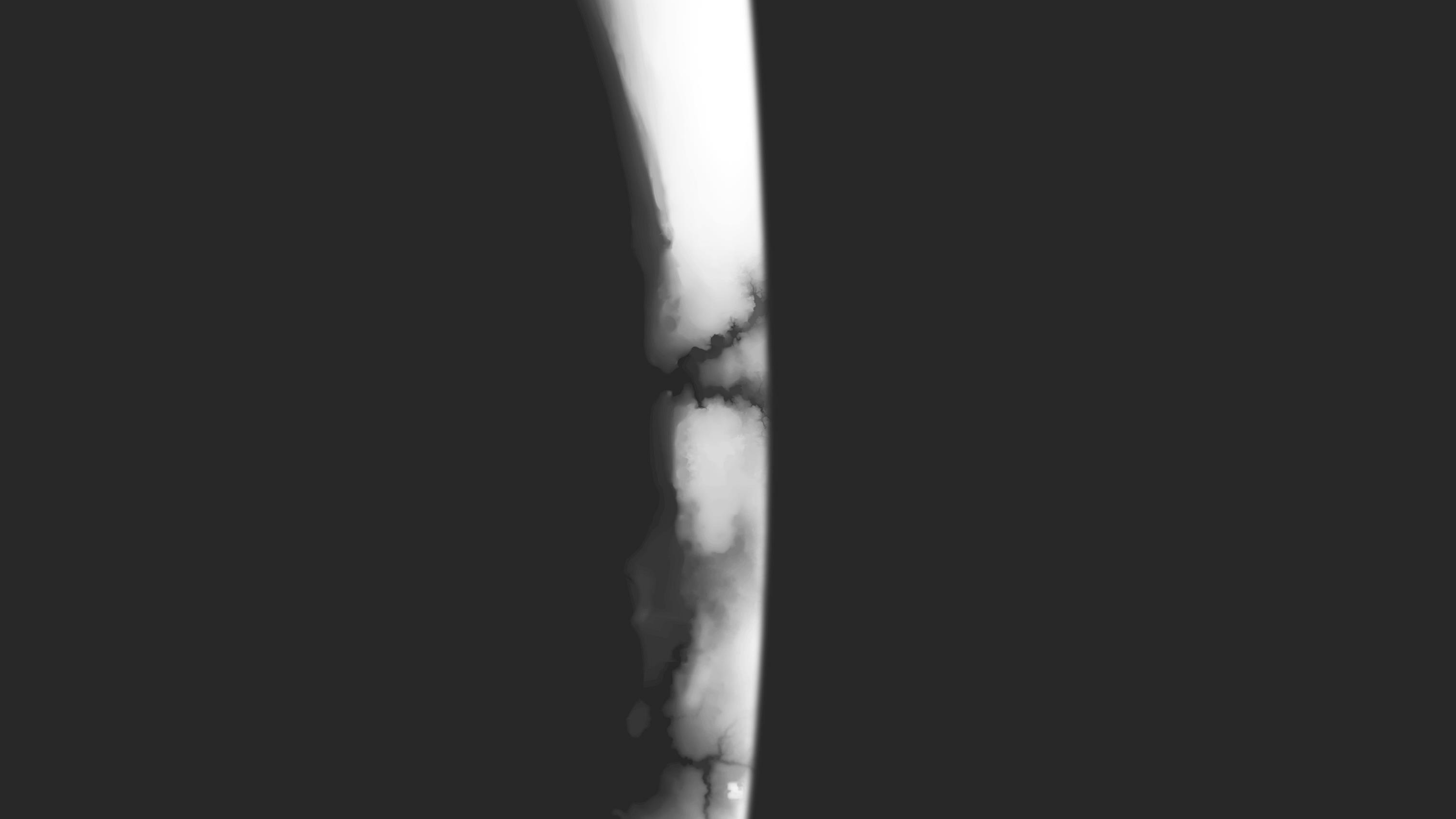


THE UNIVERSITY OF
WESTERN
AUSTRALIA



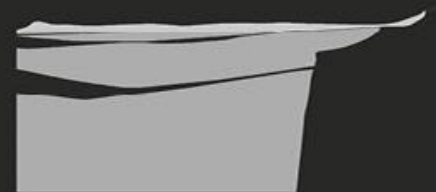
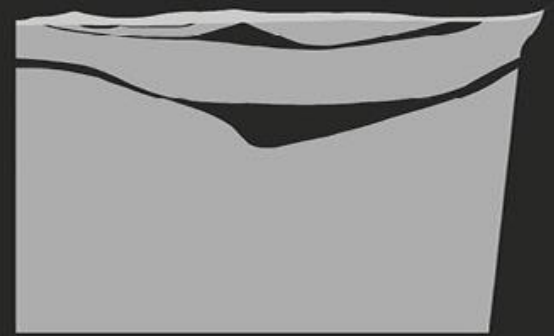
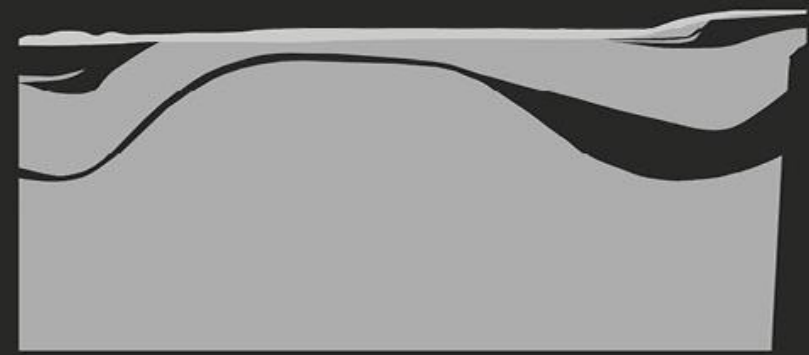




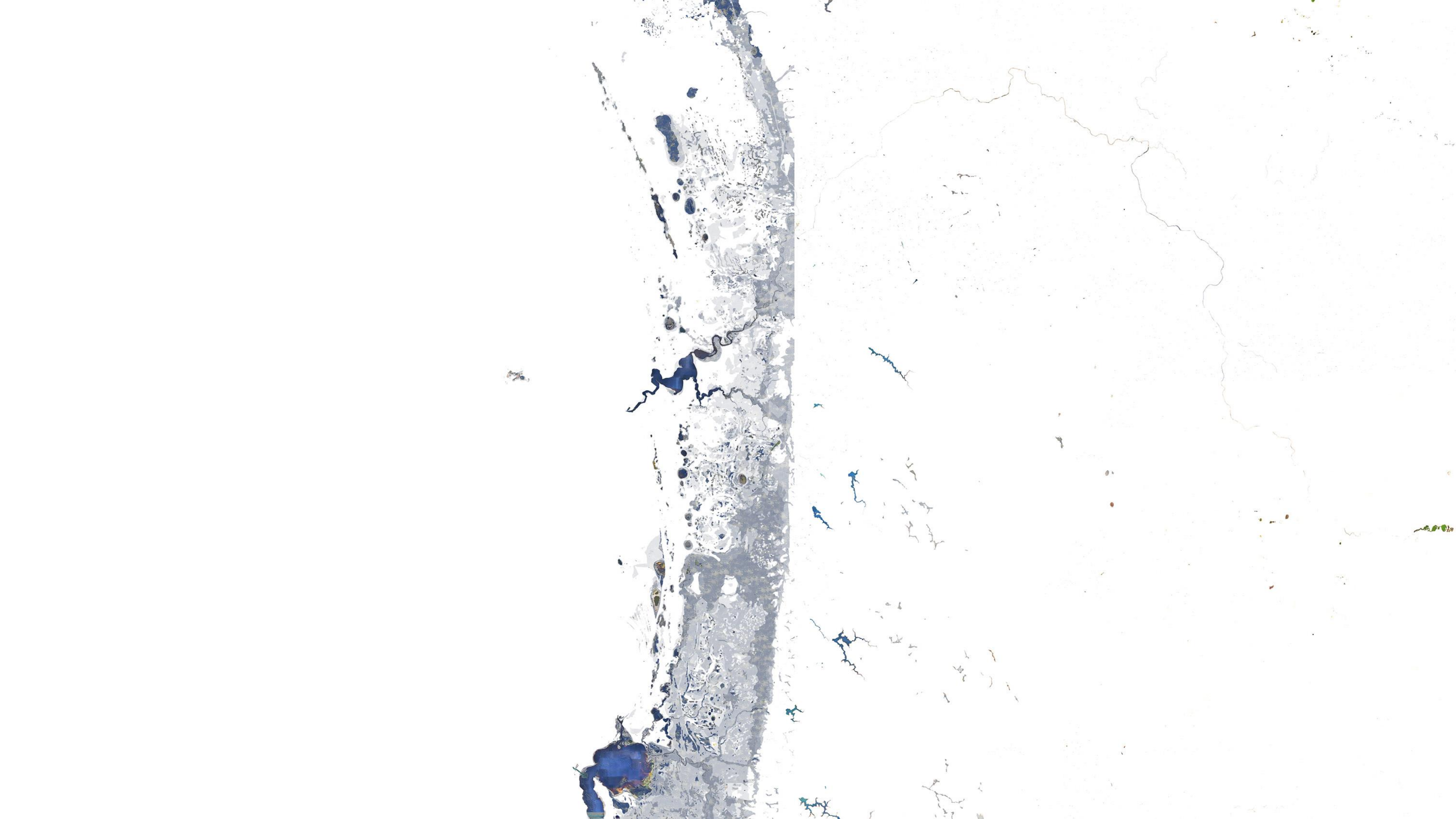




- (S) SUPERFICIAL
- (L) LEEDERVILLE
- (Y) YARRAGADEE

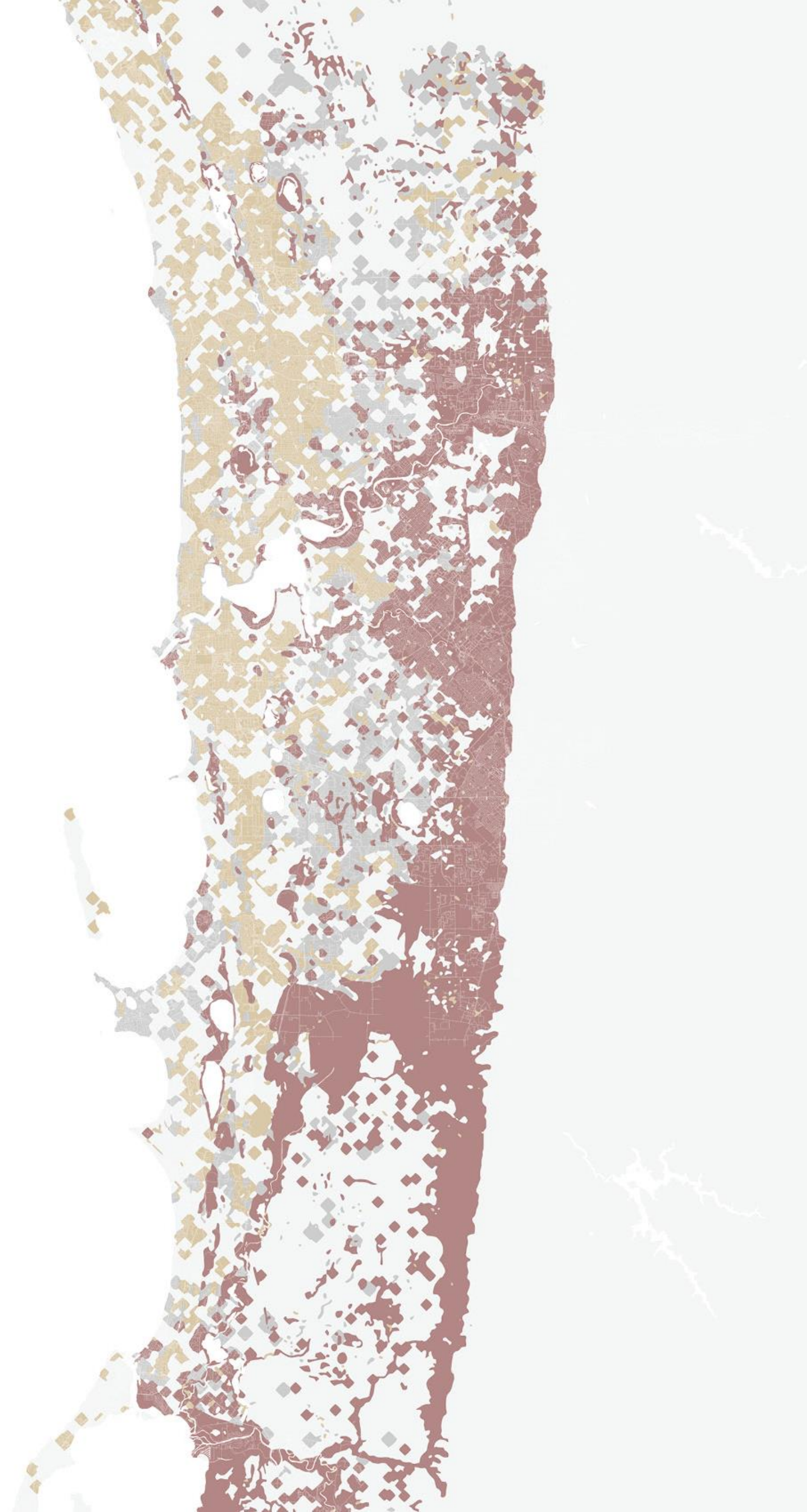


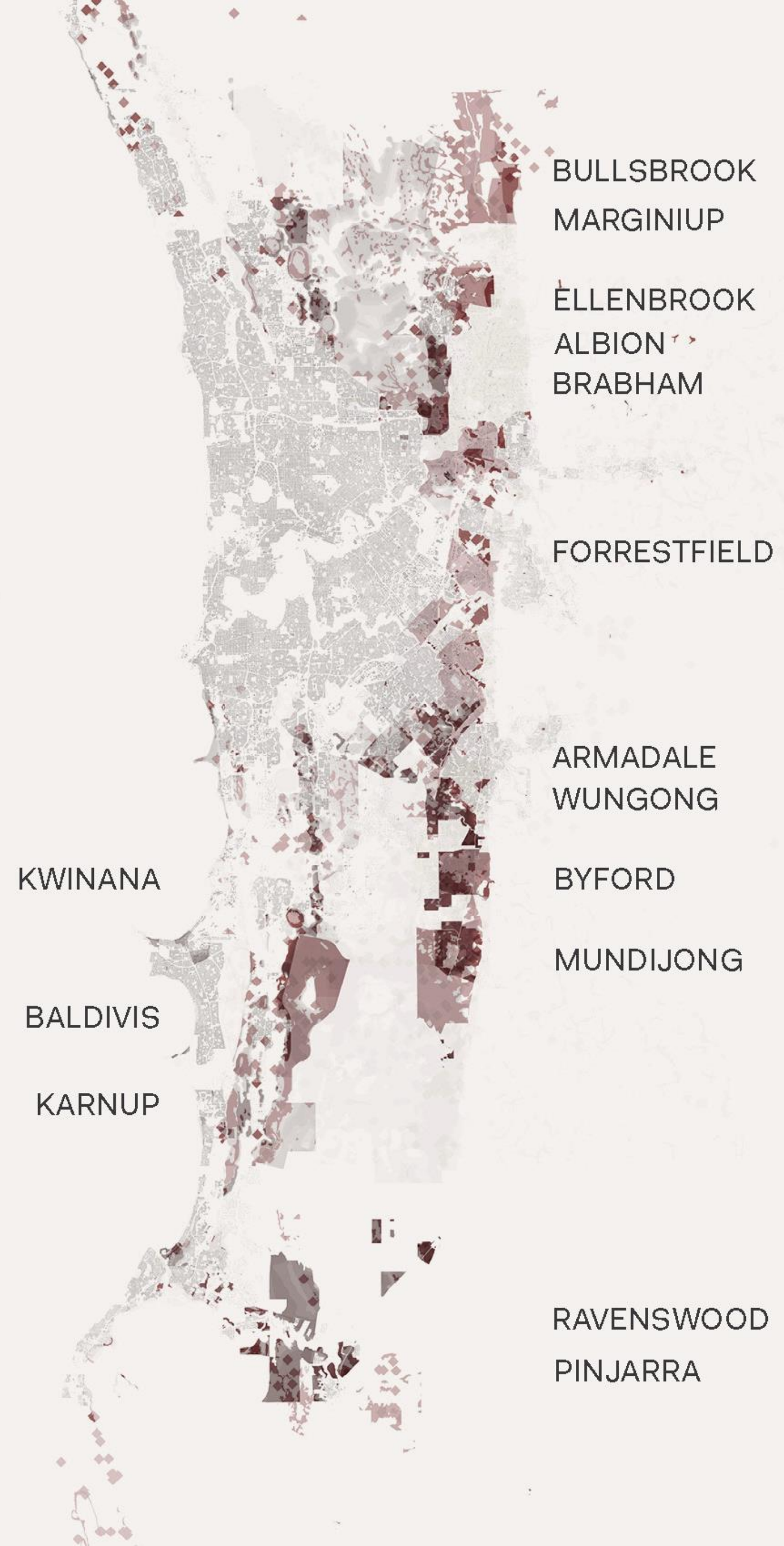
	TEMPERATURE	AGE OF WATER	CAPACITY	THICKNESS
(S)	19 to 24° C	weeks to 2,000 yrs	26 km ³	25 to 45 m
(L)	30° C	1,900 to 36,000 yrs	120 km ³	50 to 550 m
(Y)	39° C to 95° C	600 to +40,000 yrs	+1,000 km ³	+2,000 m





SANDY-LOW-GROUNDWATER
CLAYEY-HIGH-GROUNDWATER





BULLSBROOK
MARGINIUP

ELLENBROOK
ALBION
BRABHAM

FORRESTFIELD

ARMADALE
WUNGONG

KWINANA

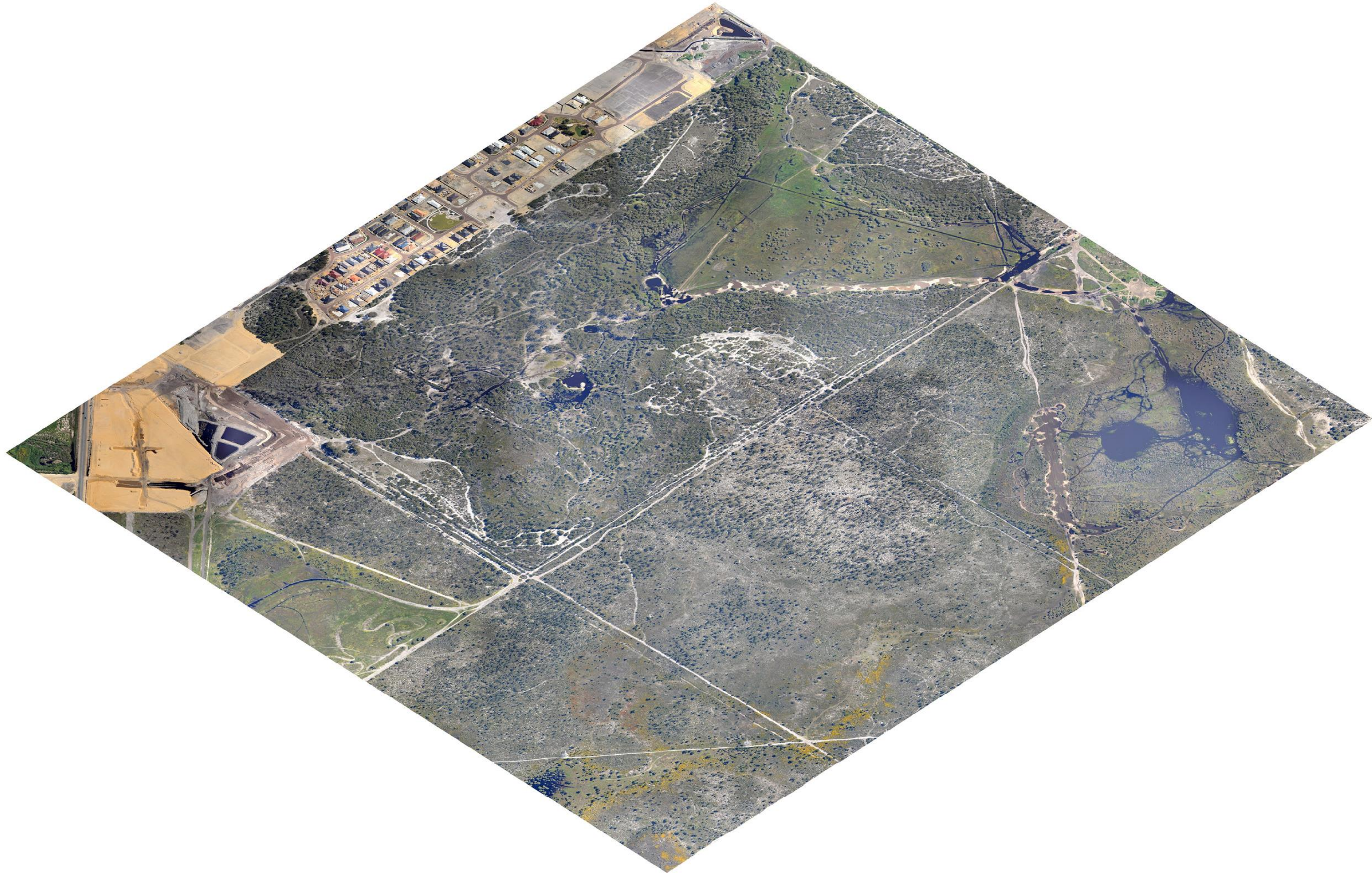
BYFORD

MUNDIJONG

BALDIVIS

KARNUP

RAVENSWOOD
PINJARRA



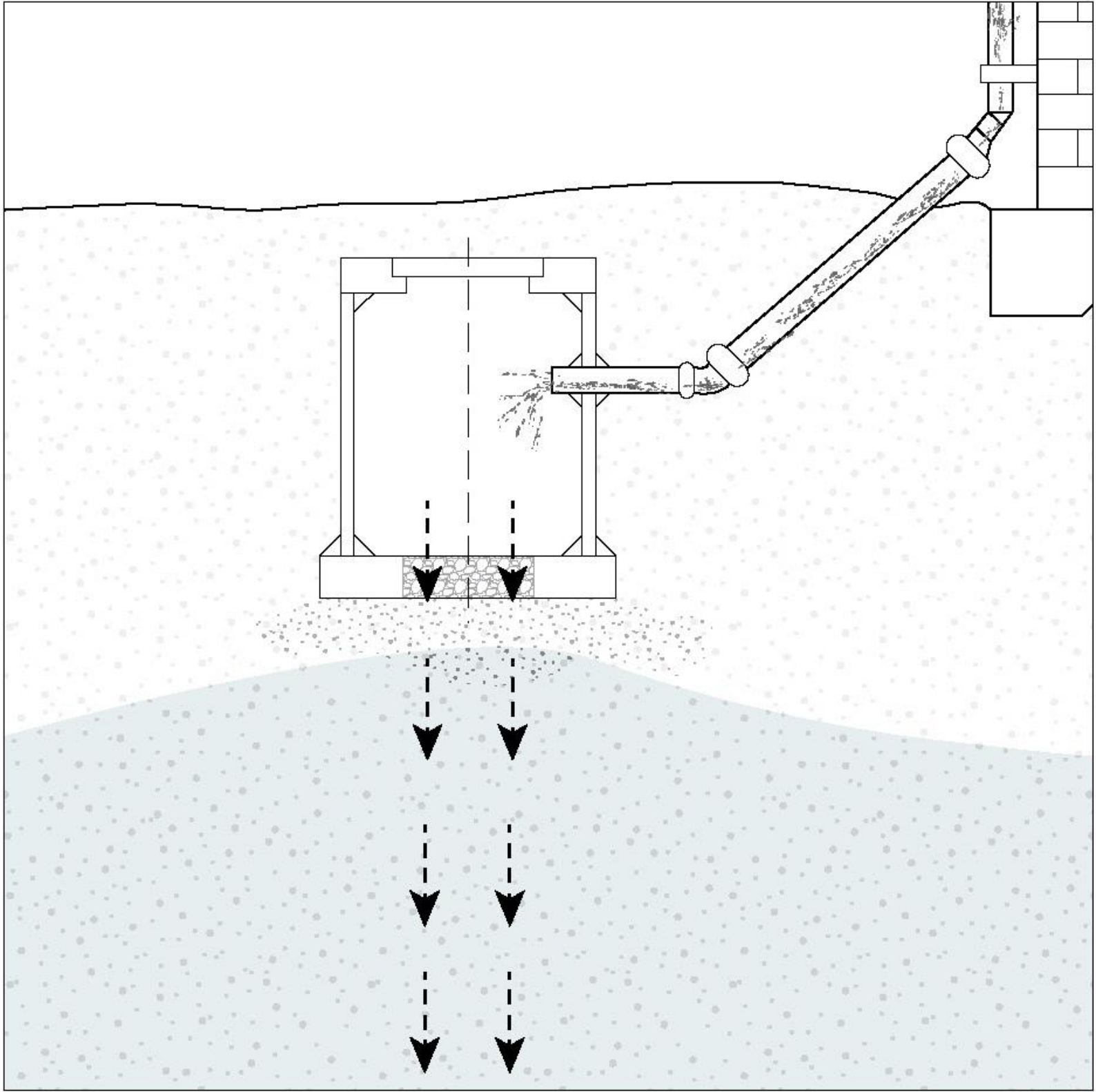








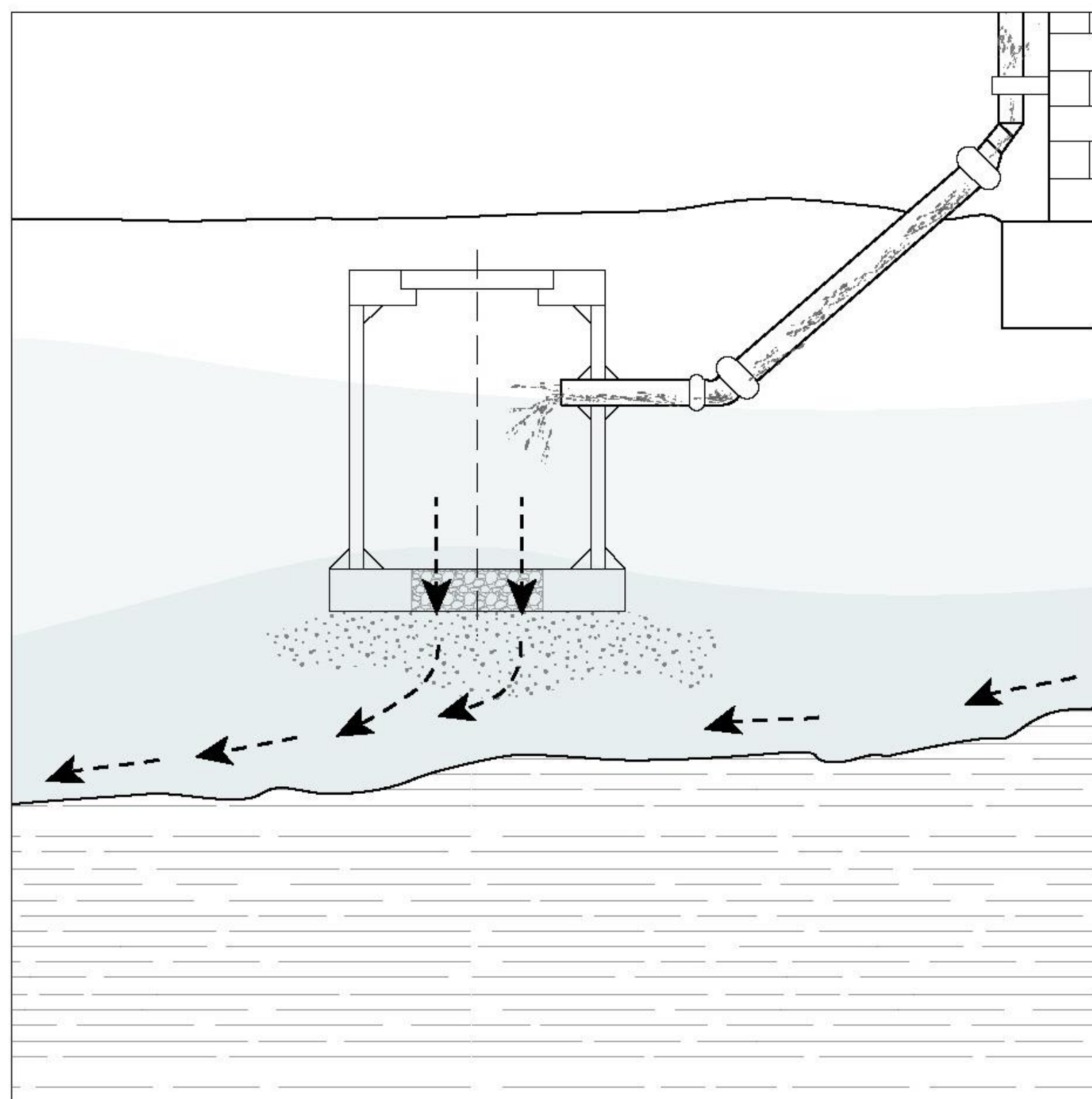




SOAKWELL IN SAND

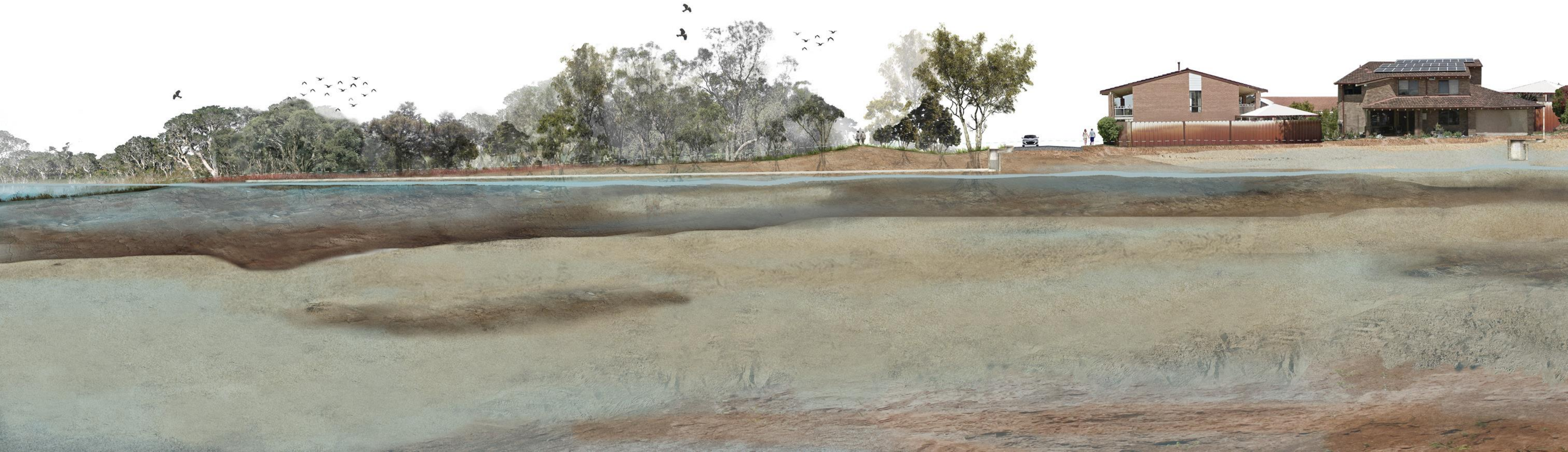
SANDY-LOW-GROUNDWATER

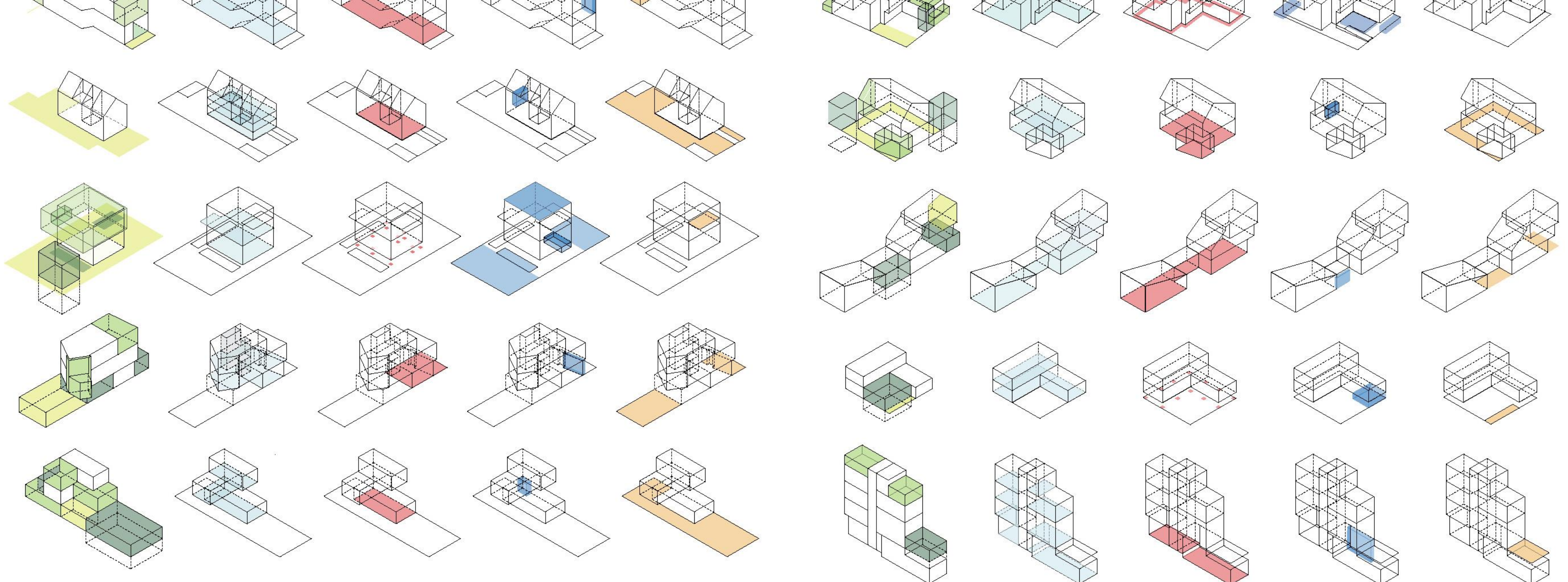




SOAKWELL WITH CLAYS

CLAYEY-HIGH-GROUNDWATER





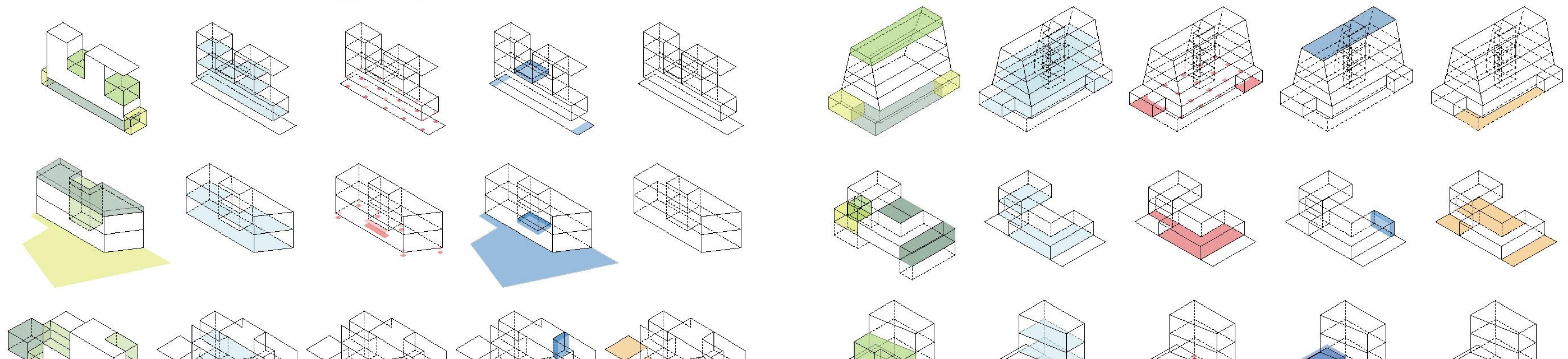
LANDSCAPE

INTERNAL

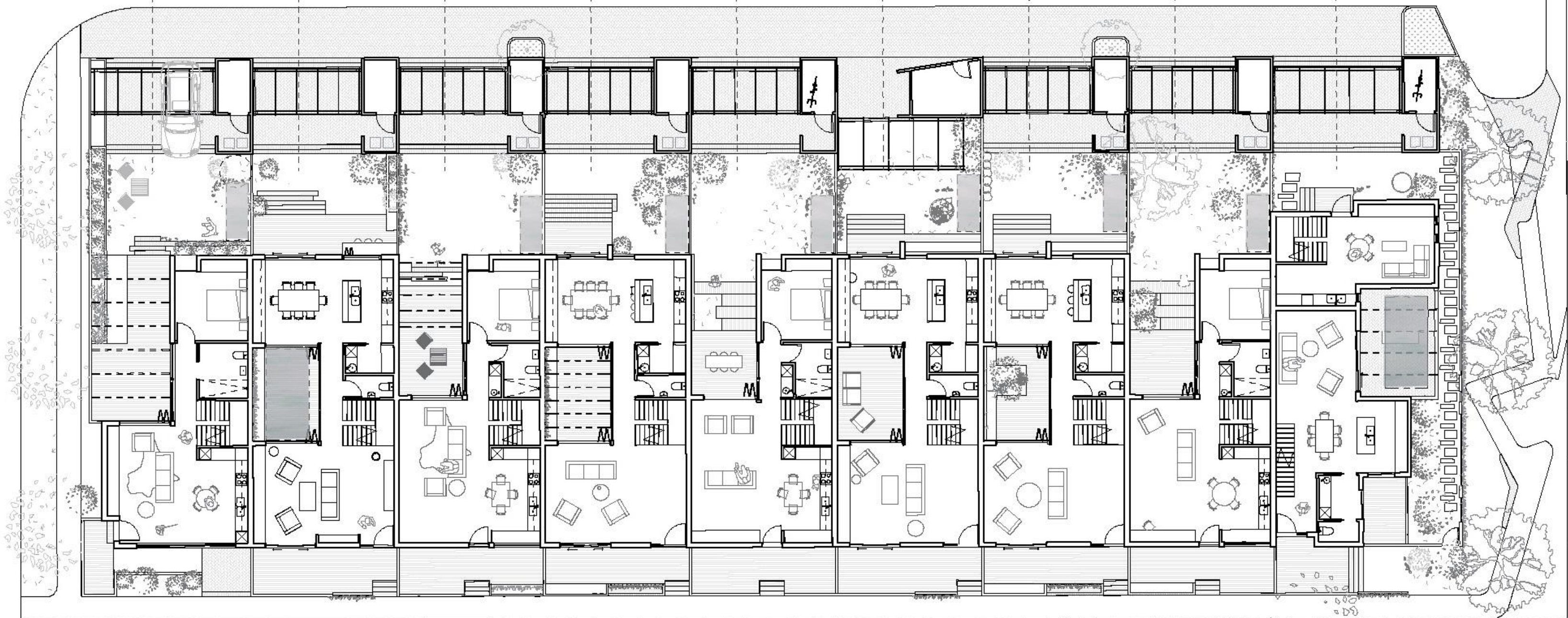
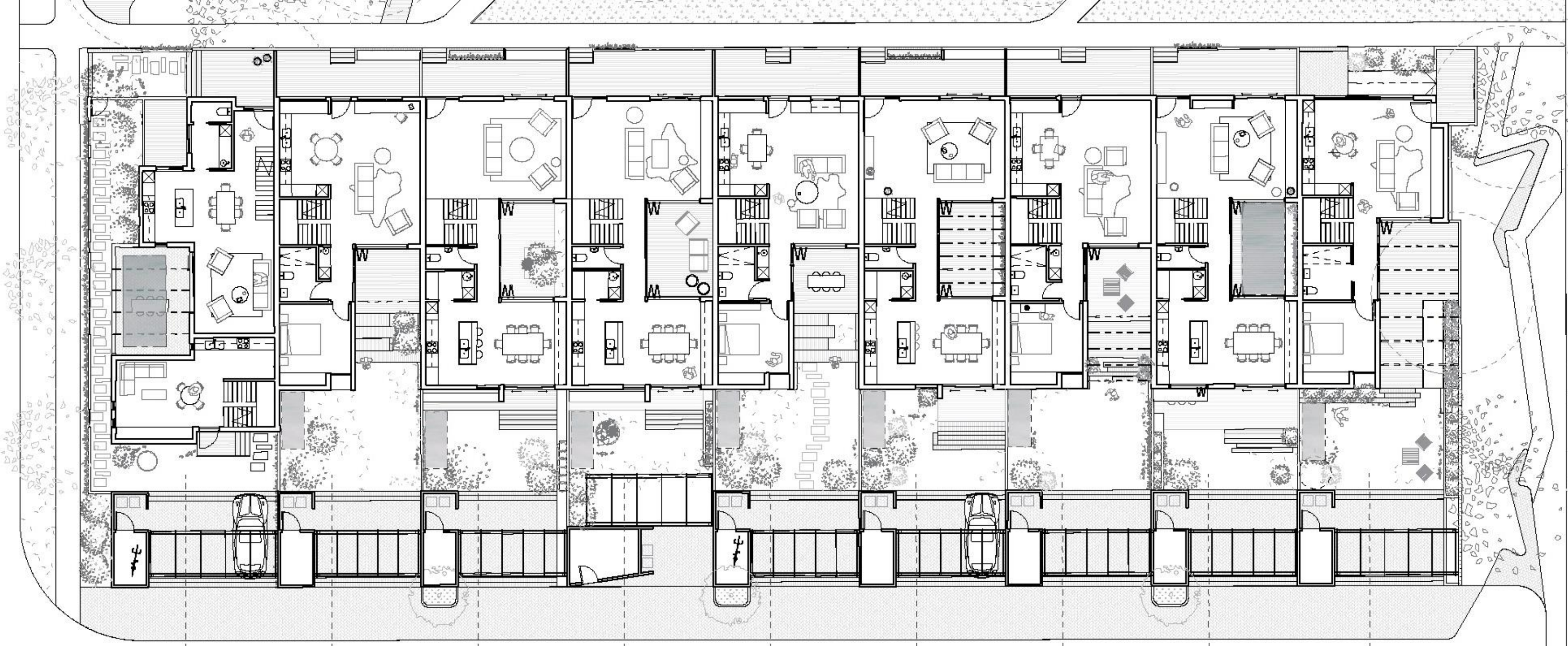
GROUNDING

RETENTION

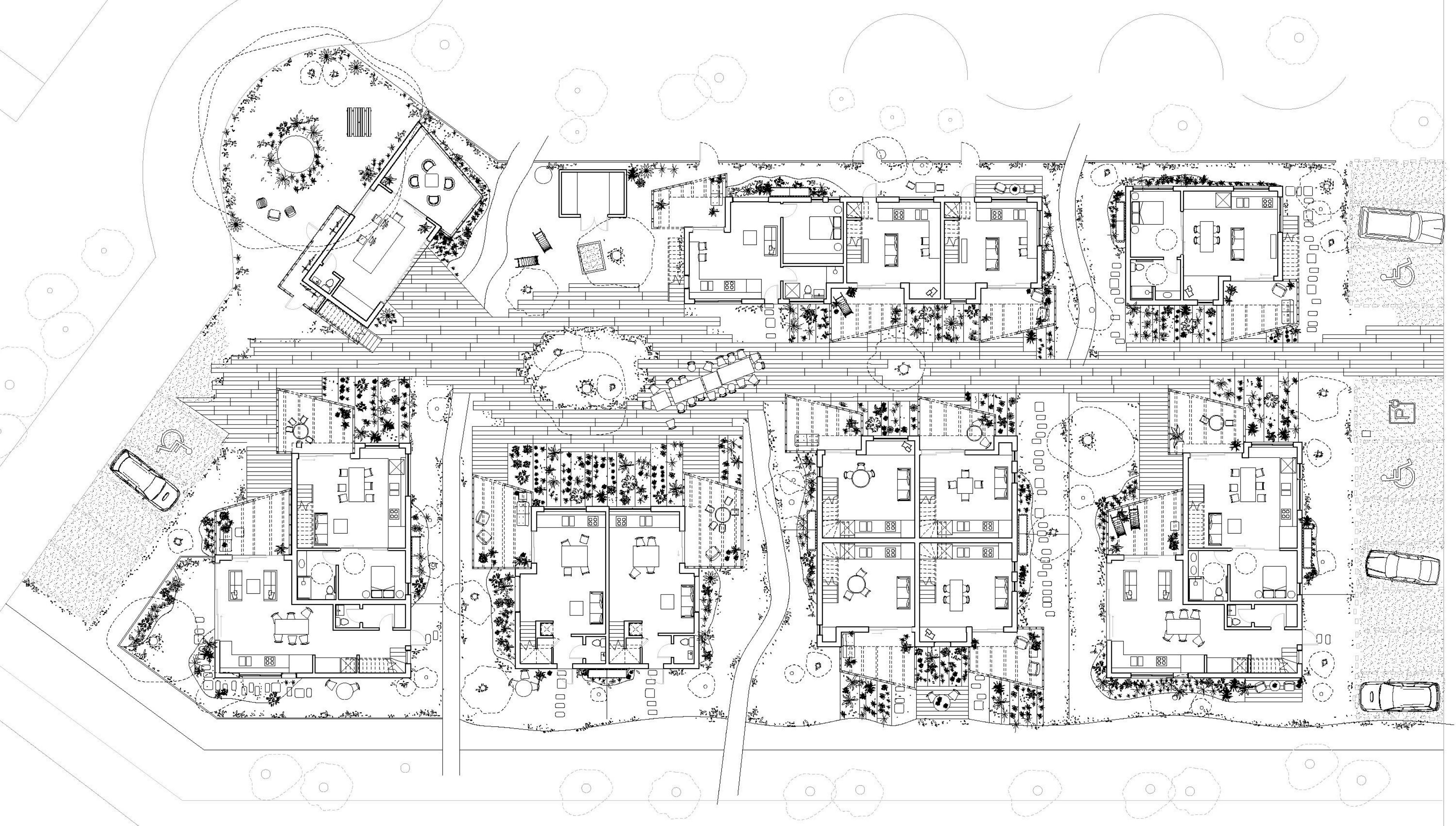
INFILTRATION



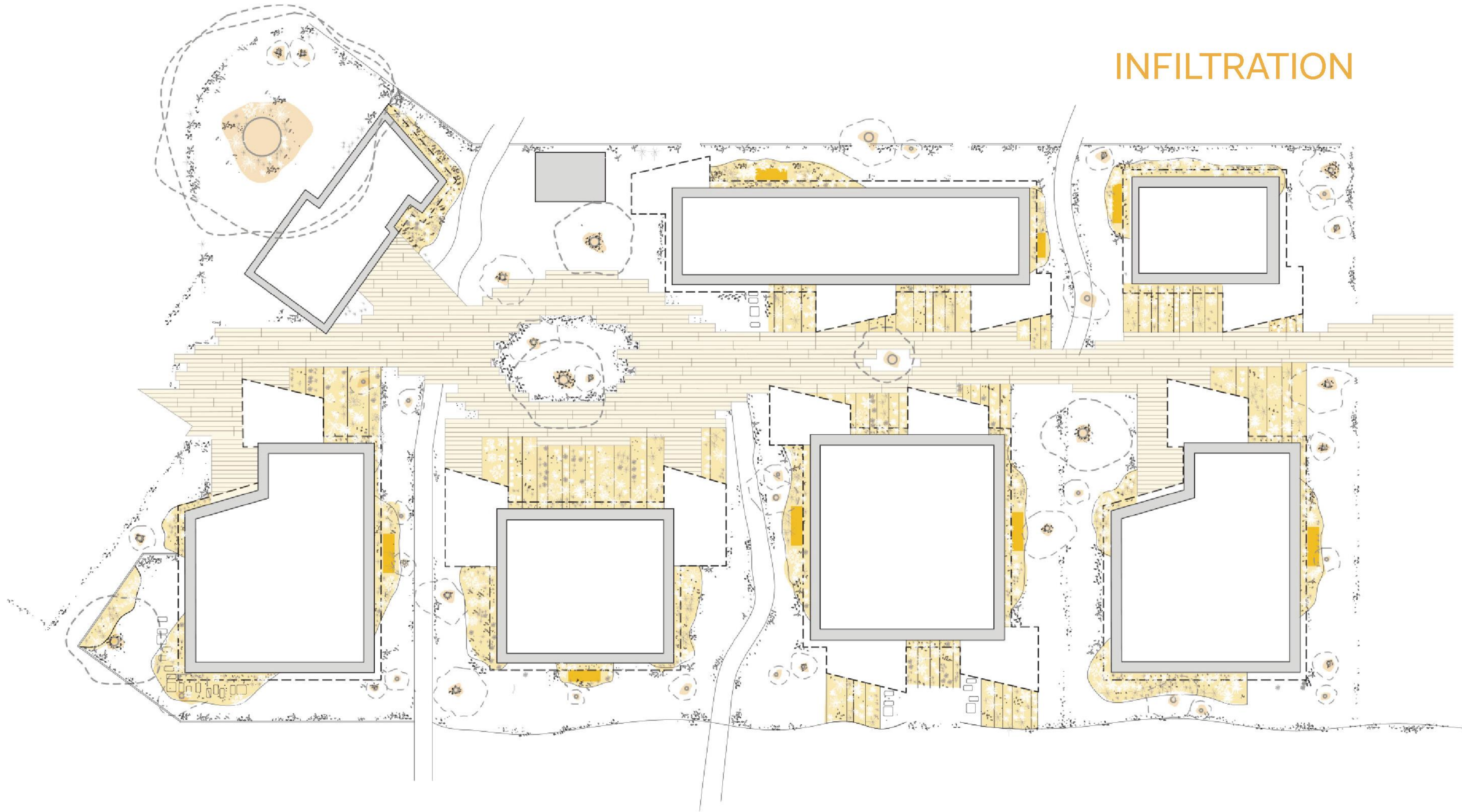








INFILTRATION



RETENTION
GROUNDING
LANDSCAPE

