



Water Sensitive Cities
Australia

Water Sensitive Cities Australia

*Water enabled, people
powered city transitions*

Information for Prospective Partners



Urban communities want water sensitive cities

Water is integral to almost every feature of the urban landscape, and enables our cities to be productive, liveable, sustainable and resilient.

We achieve water security by using all available water sources, having an informed and engaged community, and using green technologies.

Building from the CRC for Water Sensitive Cities (CRCWSC), Water Sensitive Cities Australia helps cities and towns apply the latest science to local priorities.

Here's how we do it:



- We help partners coordinate their knowledge investments to achieve greater impact and leverage. State-based programs are designed by local partners.



- We deliver a program of activities in each state, shaped by local needs and aimed at mainstreaming water sensitive practices. Partners can access internationally recognised experts to advance local water sensitive practice.



- We connect up regional networks into a national dialogue, so that cities learn from each other. This national network provides a collective voice to influence policy and regulation across these scales.



Mainstream policy and practice is the next step

Australia's urban water sector is internationally recognised. The CRCWSC's contribution has been significant, delivering research that will generate \$600M of benefit over 15 years (from 2012–13).¹

But scaling up water sensitive cities (WSC) principles and practice means we need to move rapidly from demonstration projects to business-as-usual application.

WSC Australia was established in 2018 to make water sensitive cities mainstream practice. Since then we have delivered projects across Australia and internationally that apply the CRCWSC's research and tools.

When the CRCWSC completes its program in June 2021, WSC Australia will continue the water sensitive cities mission.

With national and international perspective and networks, Water Sensitive Cities Australia provides a proven mechanism for industry, government and researchers to keep collaborating and taking water sensitive practice mainstream.

We also remain connected to research. WSC Australia will participate in new research initiatives on behalf of our partners, helping them attain better leverage on their research funding.

We exist to continue the mission of the CRC for Water Sensitive Cities:

- *Undertake interdisciplinary research on water problems*
- *Synthesise this research into practical solutions*
- *Influence policy, regulation and practices to mainstream adoption*

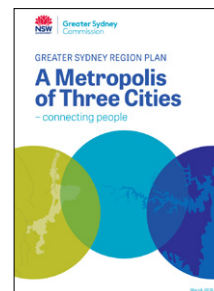
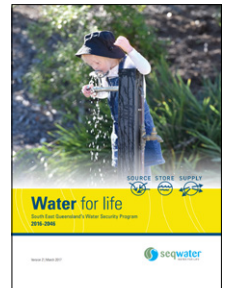
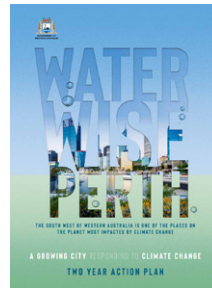


¹ <https://watersensitivecities.org.au/content/ey-impact-to-date-future-potential/>

By joining us, you can benefit

Australian and state and territory governments benefit from:

- Evidence to support policy, regulation and strategy that achieves:
 - More efficient and effective management of scarce resources
 - Integrated household, local, city and catchment-scale action
 - Community resilience and recovery from extreme events
 - Opportunities from city networks, regional community collaboration and international profile and relationships
- More effective policy delivery through direct engagement with industry opinion leaders and established communities of practice.



Water utilities benefit from:

- Piloting and scaling up technologies that better integrate centralised and decentralised solutions and make more effective use of all water sources
- Developing planning approaches to better service out of sequence urban development
- Developing the case for policy and regulation reform to support innovation and better solutions for customers
- Support to move innovation beyond pilot projects to application at scale as part of business of business as usual practice
- Stronger business cases and better answers to the question of who should pay and how?



A circular graphic with a teal border. Inside the circle, a laptop screen displays a video conference with three participants. Two participants are in the top half of the screen, and one is in the bottom half. To the right of the circle, a partial view of a tree is visible.

-

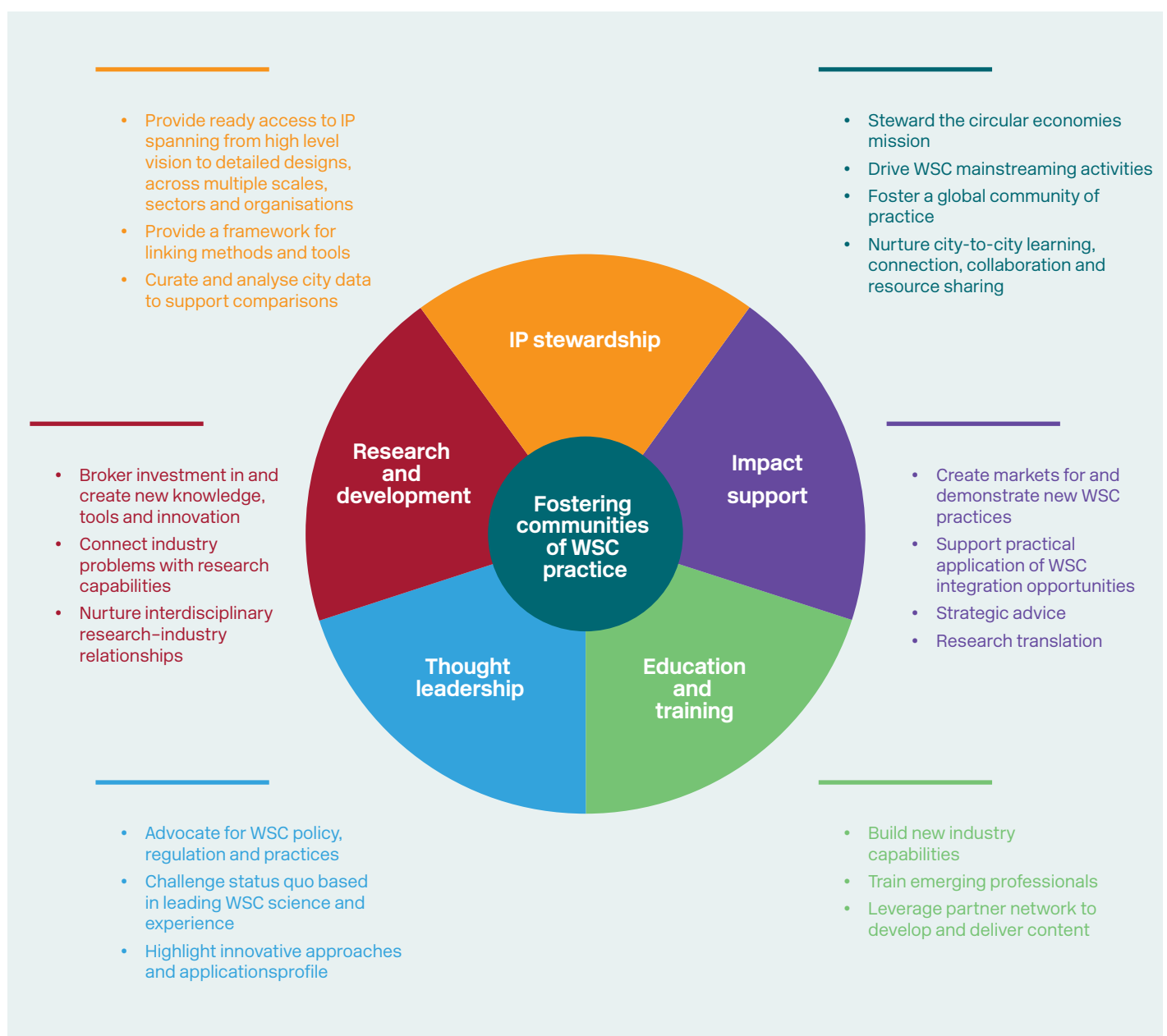
-
- A large group of approximately 50 people, mostly young adults, are posed for a group photo outdoors. They are arranged in several rows, some sitting on the ground and others standing. Many are wearing blue lanyards with ID badges. The background shows a body of water and a paved area. The photo is circular and set against a light blue background with a white border.

A circular inset image showing a group of people sitting on a wooden boardwalk overlooking a wetland area with a pond and reeds.

- Early access to emerging research knowledge and tools providing market advantage
- Brand positioning and social licence
- Advice on developing innovative sustainability solutions
- Line of sight on research to policy and the direction of future regulatory and operating environments
- Strengthened relationships with approval agencies (e.g. local governments, state planning authorities)

Here's how we make water sensitive cities mainstream

Mainstreaming water sensitive practices requires action across multiple fronts. We offer value through six integrated services:



We're looking for partners

WSC Australia is a not-for-profit, mission driven organisation. We welcome partnership at three levels:

Tier 1 partners guide WSC Australia's strategic direction by nominating the Advisory Group and leading state hub project prioritisation. They also play an important role in prioritising national projects.

Tier 2 partners determine and participate in local projects, as well as joining national projects and communities of practice.

Tier 3 partners can access information, tools and communities of practice. They participate in project and community of practice activities.

Our operating model prioritises local projects to support water sensitive cities and towns in each state. The level of local partner funding determines the size of the budget in each state.

Funding allocation and example activities

Knowledge platform - online library of tools and research

National communities of practice

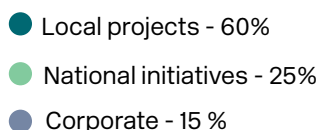
National capacity building events

National and international benchmarking and insight reports

National research initiatives

National advocacy

Forging international partnerships



Case studies

Local, applied research projects

Adapting CRCWSC tools to local contexts

Independent facilitator for state collaboration

Advocating for state policy, regulation and practice reform (e.g. submissions, presentations, networking)

Local communities of practice - connected nationally

Local knowledge sharing forums informed by national insights, experience and speakers

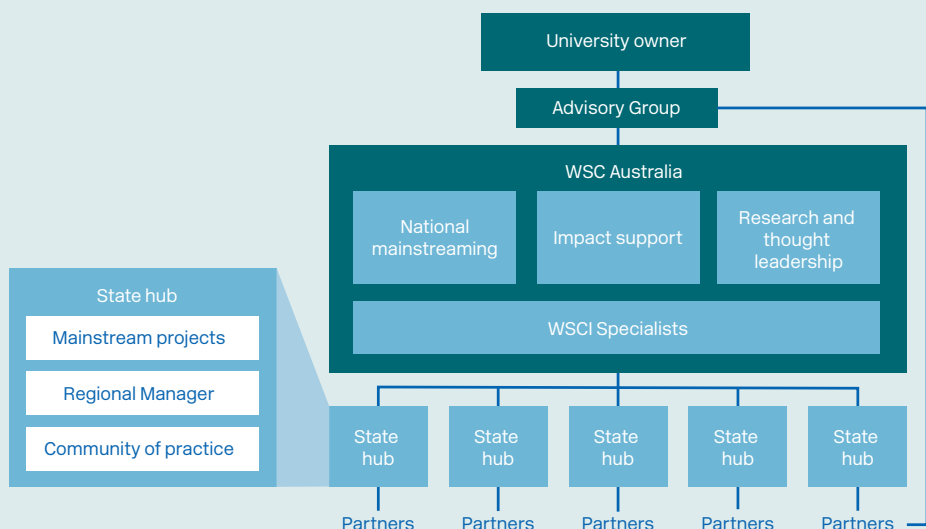
Regional Manager to coordinate all the above



Our university ownership continues our connection with the research sector, enabling deep research-government-industry partnerships.

Working within the guidance set by our owners, WSC Australia's governance arrangements ensure that roles are clear, information flows appropriately, and partners can influence the strategic direction.

Our structure includes state-based hubs. Partners in each state hub determine the local priorities and projects of WSC Australia connects with other states to coordinate city to city learning.



Let's work together to create water enabled, people powered city transitions

We're excited by the possibilities WSC Australia presents. Together we can accelerate change on local, national and international scale.

If you'd like to be involved, contact our CEO Ben Furmage:

ben.furmage@monash.edu



Water Sensitive Cities Australia



PO BOX 8000 Monash University LPO,
Clayton, VIC 3800, Australia

watersensitivecities.org.au



Water Sensitive Cities
Australia